

Landon State Office Building, 900 SW Jackson, Ste. 1051, Topeka, KS 66612-1230 | Office Hours: 8:00 am – 4:30 pm | www.ksbn.org

NURSING

Newsletter

Volume 31, No. 5 | December 2018, January, February 2019

The Official Publication of the
Kansas State Board of Nursing



1913-2013

Quarterly circulation approximately 66,000 to all APRNs, RNs, LPNs and Licensed Mental Health Technicians in Kansas.

N-STAT

- Board Members E-Mail Addresses..... 2
- KSBN Committee Reports2-3
- Kansas Announces Statewide Integration of Prescription Drug Monitoring Program..... 5
- How to Contact Us 6
- KNAP..... 7
- Kansas State Board of Nursing Joins Nursys 8
- Kansas State Board of Nursing Launches Online Applications9
- CE Offerings..... 10
- Board Meeting Schedule 11

Introducing “Kansas Nursing”: The Kansas Nursing License Verification Skill

Over the last five years, smart speakers such as Amazon Alexa and Google Home have changed the way Americans interact with technology. Smart speakers are devices that use voice commands and artificially intelligent virtual assistants to provide hands-free interactions with programmed skills.

According to Nielsen’s Media Tech Trender Survey, nearly 25% of American households owned a smart speaker device, with 45% of those households planning to purchase more devices for their home. While the majority of smart speaker users have only recently purchased their devices within the past 12 months, a survey conducted by Adobe projects that up to half of US consumers could own smart speakers before the end of 2018.

In light of these exciting and innovative developments, the Kansas State Board of Nursing (KSBN), in partnership with the Information Network of Kansas (INK), and the Kansas Information Consortium, LLC (KIC) are proud to announce the launch of “Kansas Nursing,” the Kansas Nursing License Verification skill for your Amazon device.

Kansas Nursing is a first-in-class solution that allows users to quickly and easily look up a license, verify the status of an existing license, or find answers to frequently asked questions. The skill was officially debuted at the Sep 10, 2018 KSBN Annual Program Administrators meeting.

By interacting with Alexa, Amazon’s interactive virtual assistant powered by artificial intelligence, users can access KSBN’s License Verification database via their Amazon Dot, Echo, or Show device. Here are some of the ways you can use the skill:

- Find your nursing license number
- Ask when your nursing license expires
- Learn about CEU requirements to renew
- Look up the status of an existing license

Kansas Nursing is now available in the Amazon app store. For more information, including infographics on how to interact with the skill, visit ksbn.kansas.gov/alexa.

DISCLAIMER CLAUSE

The Nursing Newsletter is published quarterly by the Kansas Board of Nursing. The providers are responsible for offering quality programs under the criteria as established by the Board. Complaints regarding continuing education programs may be reported directly to the Kansas Board of Nursing. For information on these educational offerings, contact the sponsor, not the Board.

Advertising is not solicited nor endorsed by the Kansas Board of Nursing.

For advertising rates and information, contact Arthur L. Davis Publishing Agency, Inc., 517 Washington St., P.O. Box 216, Cedar Falls, IA 50613, Ph. 1-800-626-4081, sales@aldpub.com. Responsibility for errors in advertising is limited to corrections in the next issue or refund of price of advertisement. Publisher is not responsible for errors in printing of schedule. The Kansas Board of Nursing and the Arthur L. Davis Publishing Agency, Inc. reserve the right to reject advertising. The Kansas Board of Nursing and the Arthur L. Davis Publishing Agency, Inc. shall not be liable for any consequences resulting from purchase or use of advertisers’ products from the advertisers’ opinions, expressed or reported, or the claims made herein.

“KSBN is very excited to announce the launch of our Kansas Nursing Alexa skill. We are the first state nursing board in the nation to offer access to our License Verification database and agency FAQs via virtual assistant. We are committed to remaining at the forefront of technology, in order to bring the most relevant and informative offerings to those we serve.”

Carol Moreland, MSN, RN
Executive Administrator, KSBN

What can you ask Kansas Nursing?

- Alexa, ask Kansas Nursing...
- what my license number is
- when my license expires
- when my license was issued
- what my CEU requirements are
- how I renew my license
- what my license status is
- to lookup a license
- how long I have to renew my license

current resident or

Presort Standard
US Postage
PAID
Permit #14
Princeton, MN
55371





Board Members E-Mail Addresses

JoAnn Klaassen, RN, MN, JD President 07-01-16 – 06-30-20	joann.klaassen@ks.gov
Carol Bragdon, PhD, APRN Vice President 07-01-17 – 06-30-21	carol.bragdon@ks.gov
Patricia Zeller, MSN, APRN, NP-C Secretary 07-18-2014 – 06-30-22	patricia.zeller@ks.gov
Rebecca Sander, MSN, RN 07-28-2016 – 06-30-2020	rebecca.sander@ks.gov
Sherri Brown, BSN, RN 07-27-15 – 06-30-2019	sherri.brown@ks.gov
Julianna Rieschick, RN, MSN, NEA-BC 07-01-2017 – 06-30-2021	julianna.rieschick@ks.gov
Mary Struble, LPN 07-01-15 – 06-30-2019	mary.struble@ks.gov
Mandy Karstetter, LPN 07-01-2017 – 06-30-2021	mandy.karstetter@ks.gov
Vacant	
Vacant	
Vacant	

KSBN COMMITTEE REPORTS

June 2018 Education Committee

The Education Committee met June 12, 2018 and was called to order by Rebecca Sander, MSN, RN, Vice Chair at 8:30 a.m. in Room 509 of the Landon State Office Building. The minutes from March 27, 2018 were approved.

The site visit report from Butler Community College PN Program was reviewed. It was moved to accept the site visit report for Butler Community College PN program with recommendations and to reapprove the program for a period of five years.

The site visit report from Donnelly College PN Program was reviewed. It was moved to accept the site visit report for Donnelly College PN Program with recommendations and to reapprove the PN program for a period of two years with a site visit in 2020.

The following schools presented major curriculum changes:

- Highland Community College LPN to RN Completion Program
- Cloud County Community College ADN Program
- Coffeyville Community College ADN Program
- Emporia State University BSN Program
- Washburn University BSN Program
- Butler Community College PN and ADN Programs
- Donnelly College ADN
- Kansas Practical Nurse Core Educators

Salina Area Technical College requests the approval of an ADN program. It was moved to accept the request from Salina Area Technical College to offer a ADN program with a site visit to occur before approval is given to admit students.

Site visit schedules for 2018 and 2019 were reviewed. Carol Moreland will email committee members requesting assistance with site visits, if needed.

2017 NCLEX RN pass rates were discussed. Two programs, Colby Community College ADN Program and Kansas City Kansas Community College ADN Program, have NCLEX first time pass rates less than 75% for the last three consecutive years. It was the consensus of the Education Committee to conduct focused site visits for these two programs.

Monica Scheibmeir, PhD, APRN, FAANP gave an update on the Military Articulation Initiative.

No petitions for permission to test/retest were reviewed and action taken. The meeting was adjourned at 10:47 am.

- No campus attendance.
- Set your own pace! Full or Part-time options available.
- Nursing courses can be completed in as little as two semesters.
- 8-week course sessions starting every fall, spring, and summer.
- Quality, affordable education.
- Out of state tuition waiver available.

For More Information
Contact Pamela Sandvig at pamela.sandvig@opsu.edu or 580-349-1428
www.opsu.edu



“
Our nursing resources make a big difference.
”

Our RNs enjoy a close-knit culture with leading-edge care and a highly supportive nurse management team. Ranked as one of Kansas City's Top 15 Employers by the *Business Journal*, we are on a Magnet® journey. Join us.

We currently have a variety of outstanding opportunities for experienced RNs, including:

Clinical Documentation Specialist
Charge Nurse (Progressive Care Unit)
ICU & ER | CVICU | Rehab | Renal Telemetry

We offer excellent benefits, shared governance, and one of the best retirement packages in town. Learn more at NKCHnursesknow.org

EOE

WE WANT NURSES LIKE YOU!

Registered Nurses
\$10,000 Sign-on bonus*
*Applies to RNs with minimum of 2 years experience

- 401K with employer matching, plus annual pension plan contribution
- Tuition Reimbursement up to \$5,250/year
- Loan Forgiveness up to \$18,000
- Free boarding for out-of-town RNs
- Self Scheduling

CALL HUMAN RESOURCES AT 785-452-7782
OR VISIT www.srhc.com/careers

Salina Regional Health Center is an equal opportunity employer

KSBN COMMITTEE REPORTS

June 2018 APRN Committee

The APRN Committee met June 12, 2018 and was called to order by Carol Bragdon, PhD, APRN, Chair at 1:30 pm in Room 509 of the Landon State Office Building. Minutes from March 27, 2018 were approved.

Bobbe Mansfield, DNP, FNP-BC reported on the Prescription Monitoring Program Committee. The Committee compared with other states their criteria on how to identify potential problem users of controlled substances or potential problem prescribers of controlled substances. The focus is on what is the criteria for identifying who these people are and what needs to be done with them in their respective disciplines.

Carol Bragdon reported the Attorney General's office voiced an opinion there was nothing clear at this point to require certification. Until rules and regulations are revised or legislations regarding the Nurse Practice Act changed we cannot require certification.

Carol Moreland reported that Cara Busenhardt and Diane Glynn, KSBN Practice Specialist will be meeting with the Board of Healing Arts to discuss concerns brought forward by the APRN Committee and the Board of Nursing and work on resolutions to be able to move forward the CNM-I draft regulations for approval.

Michelle Knowles, APRN, RN gave an update on the Kansas Advanced Practice Nurses (KAPN) organization. A decision was made at the KAPN

meeting in mid-May to proceed forward with a KAPN bill to the Legislature in January 2019. They are working with National Council of State Board of Nursing (NCSBN) and American Association of Nurse Practitioners (AANP) on the draft bill.

It was moved to approve the following out of state schools and their courses:

- College of St. Scholastica – Primary Care Adult/Gero NP
- Herzing University – Family NP
- Union University – Family NP

It was moved to approve the following statutes and regulations as written: K.S.A. 65-1134, K.S.A. 65-1153, K.S.A. 65-1154, K.S.A. 65-1155, K.S.A. 65-1158, K.S.A. 65-1159, K.S.A. 65-1163, K.S.A. 65-1164, K.A.R. 60-13-102, K.A.R. 60-13-112.

The meeting was adjourned at 2:24 pm.

Investigative Committee

The Investigative Committee meeting for June 11, 2018 was called to order at 9:00 am. Minutes for the March 2018 meeting were read and approved. The meeting spanned Monday and Tuesday due to scheduling of staff and case review. The Impaired Provider Contract was discussed in anticipation of the RFP process that will be required for the next contract. Further discussion will be had at the September meeting. An executive session was held on Tuesday. Investigative cases were reviewed and disposed of by the Committee members.

Practice Committee

The Practice Committee met on Tuesday June 12, 2018. It was called to order at 3:00 pm. The Committee reviewed and approved the March 2018 minutes. An update was given on the Pharmacy Board regulations pertaining to epinephrine kits to be stocked in schools. Those regulations are still pending completion. Statutes and regulations were reviewed as a regular part of the five-year review process.

**CLEAR YOUR DEBT
REPAY YOUR LOANS
ASK ME HOW TODAY!**

REGISTERED NURSE

Excellent Starting Salary
Continuing Education
Various Health Insurance Plans
Defined Benefit Retirement Option
Discounts on attractions in our area
NurseCorps Loan Repayment Program

WWW.NEWMANRH.ORG
NEWMAN REGIONAL HEALTH
ATTN: HUMAN RESOURCES
1201 W. 12 TH ST., EMPORIA, KS 66801
620-343-6600
E-MAIL: RECRUITER@NEWMANRH.ORG

NEWMAN REGIONAL HEALTH

**MSN
FAMILY NURSE
PRACTITIONER**

STMARY.EDU/FNP

UNIVERSITY of SAINT MARY

SANGER LAW OFFICE

- Applications/Renewals/Reinstatements
- Investigations
- All Disciplinary Actions
- Settlement Negotiations
- Hearings/Appeals

785-979-4353

www.sangerlawoffice.com

dsanger@sangerlawoffice.com

Consultations Are Always Free!

**A Law Practice Dedicated to
Defending Your Nursing License**

**Statewide Legal Defense of
LPN, RN, and APRN Licenses**



Not All Carriers Are Created Equal

A Kansas Newborn Screening Blood Spot Timeliness Initiative



What is Newborn Screening?

Most newborns look perfectly healthy, even the ones with a serious medical condition. They will look and act normal up until they start displaying symptoms that can be irreversible. This is why every baby born in Kansas is screened for 31 different conditions that, if left unidentified and untreated, can cause severe illness, developmental disability, or in some cases death. The Kansas Department of Health and Environment (KDHE) and the Kansas Health and Environment Laboratories (KHEL), in collaboration with birthing facilities and midwives, provide for a series of 3 newborn screens: a hearing screen for hearing loss, a heart screen for critical congenital heart disease (CCHD), and a blood screen for 29 serious and potentially fatal disorders.

The Blood Screen... Do you mean the "PKU" test?

When Newborn Screening began, states only screened for Classic Phenylketonuria (PKU). Therefore, the blood screen was largely referred to as the "PKU test." Now, most states screen for at least 29 of the 35 disorders recommended by the Advisory Committee on Heritable Disorders in Newborns and Children (ACHDNC). It is no longer accurate to refer to the blood spot screen as "the PKU test." When talking to parents or creating internal references, it is a good practice to refer to the screen as the Newborn Screening Dried Blood Spot.

Shipping the Bloodspot Cards Quickly and How It Affects the Screening Process

The national timeliness goal for Newborn Screening is to have the lab results from the blood spot reported out to the Primary Care Provider (PCP) within 5 days of life for time critical results and 7 days of life for all other results. If the baby goes into crisis or develops symptoms before the lab results are completed, then the screening process loses its effectiveness. Therefore, timeliness in the Newborn Screening process is crucial. Every part of the process must work together to certify timely results including measures to ensure that the blood spot be collected between 24 to 48 hours (the closer to 24 hours, the better), sent to the state laboratory in Topeka, KS via overnight courier, processed and then results reported back to the submitting facility and to the PCP. Most of this process is guided by national recommendations or State regulations. These recommendations and regulations outline when to collect, how to collect and how fast the screen needs to travel but this does not control what carrier each facility pays for.

Unfortunately, not all carriers are created equal and Topeka is certainly not an equal distance from every submitting facility in Kansas. For example, if a facility in Western Kansas sends their specimens through the US Postal Service, the specimens head to the predetermined postal facility to be sorted, even though that can often be hours or days in the wrong direction and may even be in a different state. This can put

the child at a deadly risk. The conditions screened for in Kansas include 17 time-critical disorders which can cause symptoms within the first week of life. If the specimen does not arrive to the laboratory within 3 to 4 days from birth, it is very difficult to begin testing and provide results within the timeliness goal.

The Timeliness Initiative:

In August 2017, Kansas Newborn Screening Program implemented a timeliness initiative to determine if utilizing overnight transport would decrease the transit time for facilities and what impact this change in transit time would have on the overall goal of reporting within 7 days. For selected facilities, the Kansas Newborn Screening Program used grant funds to cover overnight UPS shipments of specimens for a few select facilities. In the time that this initiative has occurred the program has learned some valuable lessons that need to be passed on:

Lesson 1: Start the process off right! The closer to 24 hours to collect, the better. Thus far, the initiative has reemphasized the importance of collecting on time. If the facility is not collecting on time, improving transit time only tackles part of the problem. It is important to make sure your facility is hitting the mark at every step in order to achieve the overall goal of reporting time critical results in 5 days and all other results in 7 days.

Lesson 2: Working for the weekend! A major barrier across the board is a miscommunication around Saturday pickups. When working with carriers, it is crucial to involve them in the importance of their part in the Newborn Screening Process. If a

specimen just misses the Friday pickup and there is no Saturday pickup, then most often it waits until Monday. This creates a major lag in the process. When looking into possible carriers make sure expectations and needs are clear for your facility and that weekend pickup processes are put into place if necessary.

Lesson 3: Explore each option!

This initiative did largely improve the transit time for some, like Hospital E shown below, but not all participating facilities showed improvement. This goes to show that UPS is not a "one solution solves all" option. Each facility should look into their specific internal barriers for timeliness and subsequently identify solutions to those barriers.

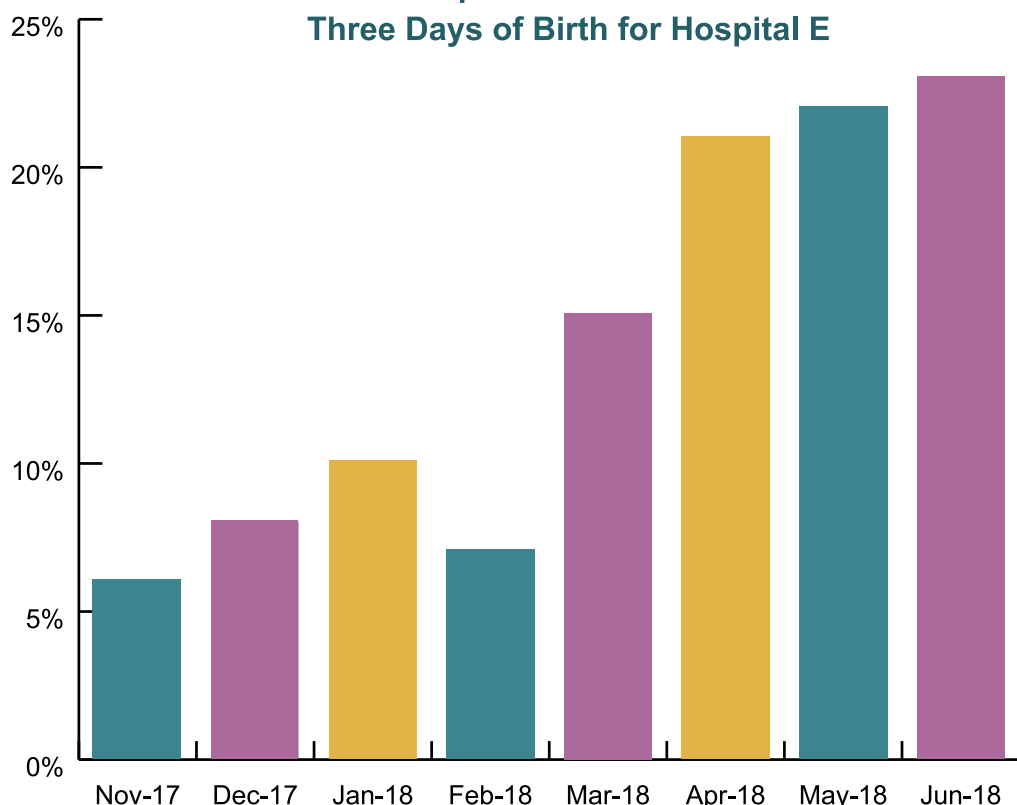
Newborn Screening Timeliness Checklist: What You Can Do to Improve the Process

- ✓ Is your facility collecting close to 24 hours for most of your specimens?
- ✓ Does your facility have a carrier log? Having a carrier log for each specimen to include where and for how long the specimen dries, when and where it's packaged and then it's picked up from your facility. This can help identify where a delay in Newborn Screening may be happening within your facility.
- ✓ Be Informed, Be an Advocate!
- ✓ Do you know what carrier your facility utilizes? If not, find out!

State Program Contact Information

Mary Hinze
Newborn Screening Educator
785-296-8212
Mary.Hinze@ks.gov
www.kdheks.gov/newborn_screening

Percent of Specimens Received Within Three Days of Birth for Hospital E



Kansas Announces Statewide Integration of Prescription Drug Monitoring Program

Adding K-TRACS Data to Electronic Health Records and Pharmacy Management Systems

The Kansas State Board of Pharmacy (Board), in conjunction with the Kansas Department of Health and Environment (KDHE), is pleased to announce a new partnership with Apriss Health to provide interoperability services for all prescribers and pharmacists in Kansas to access K-TRACS, the Kansas Prescription Drug Monitoring Program, through the PDMP Gateway®. "This is an opportunity for Kansas to deliver a more efficient and patient-oriented prescription drug monitoring program," said KDHE Secretary Susan Mosier, MD, MBA, FACS. "Integrating a patient's controlled substance prescription data into the electronic health record helps providers treat that patient."

The project is funded by a grant from the Centers for Disease Control awarded to the Kansas Department of Health and Environment. "Grant funds will support Gateway® connection costs for each Kansas electronic health records and pharmacy management system approved for integration," said Board Executive Secretary Alexandra Blasi. "This multiagency collaboration furthers the K-TRACS mission to prevent diversion, misuse and abuse of controlled substances in Kansas, while protecting legitimate medical use."

The Board successfully piloted electronic medical/health records integration a few years ago, enabling a single sign-on for access to a patient's medical record and prescription history. The Board will begin to model this integration statewide which will increase availability, ease of access, and use of a patient's controlled substance prescription history for making critical and informed prescribing and dispensing decisions. Currently, prescribers and pharmacists log in to separate systems to query patient data which takes valuable time away from patient care and interaction. This integration simplifies the process by creating a one-stop-shop, making K-TRACS data directly available in the patient's electronic record.

For more information and to request integration, please visit <http://pharmacy.ks.gov/k-tracs/k-tracs-statewide-integration>. Integrations must be approved by the Board and will require reporting to the Board regarding such connections.

fdihb.org

Michelle Beasley, MSN, RN
Nursing Recruitment
michelle.beasley@fdihb.org
928.688.6220



Western Plains Medical Complex

3001 Ave A • Dodge City, KS 67801 • 620.225.8400 • www.westernplainsmc.com

DESIGNED TO CARE

ARJ Infusion Services is seeking talented R.N.s in Kansas who thrive on delivering compassionate home infusion care to people with rare and chronic conditions.

- Competitive benefits package
- Flexible scheduling
- Professional development and training

Apply Today!
866-451-8804
arjinfusion.com/careers



How to Contact Us

785-296-4929



ADMINISTRATION 785-296-5752

Carol Moreland, MSN, RN
Executive Administrator carol.moreland@ks.gov 785-296-5752

Adrian Guerrero
Director of Operations adrian.guerrero@ks.gov 785-296-5935

Vacant

EDUCATION 785-296-3782

Vacant

Vacant-Education Specialist

Jill Simons
Senior Administrative Assistant
Continuing Education jill.simons@ks.gov 785-296-3782

LEGAL DIVISION DISCIPLINE 785-296-4325

Bryce Benedict
Assistant Attorney General bryce.benedict@ks.gov 785-296-4325

William Skepnek
Assistant Attorney General william.skepnek@ks.gov 785-296-4325

Vacant

INVESTIGATION 785-296-8401

Diane Glynn, JD, RN
Practice Specialist diane.glynn@ks.gov 785-296-8401

Tina Beach
Administrative Specialist tina.beach@ks.gov 785-296-8401

Kimberly Balzer, RN
RN Investigator III kimberly.balzer@ks.gov 785-296-4325

Margaret Zillinger, BSN
RN Investigator III margaret.zillinger@ks.gov 785-296-4325

Mickie Walker, RN
RN Investigator III mickie.walker@ks.gov 785-296-4325

Debra Quintanilla, RN
RN Investigator III debra.quintanilla@ks.gov 785-296-4325

Ruth Humbert, RN
RN Investigator III ruth.humbert@ks.gov 785-296-4325

Kathleen Chalkley, LPN
Special Investigator II kathleen.chalkley@ks.gov 785-296-4325

Marilyn Nicol
Senior Administrative Assistant marilyn.nicol@ks.gov 785-296-1817

Vacant

LICENSING

RaeAnn Byrd
Licensing Supervisor raeann.byrd@ks.gov 785-296-6573

Barbara Bigger
Senior Administrative Assistant
Reinstatements & Renewals barbara.bigger@ks.gov 785-296-2926

Karen McGill
Senior Administrative Assistant
RN & LPN Applications/NCLEX karen.mcgill@ks.gov 785-296-2453

Katelynn Ladner
Senior Administrative Assistant
Reception
Name Change, Verifications
& Fingerprints katelynn.ladner@ks.gov 785-296-3375

Vacant

INFORMATION TECHNOLOGY

Kolton Colhouer
eGov Support Analyst kolton.colhouer@ks.gov 785-296-2240

Anthony Blubaugh
Applications Developer anthony.blubaugh@ks.gov 785-296-3928

Affordable, 100% Online Degrees

- Fully accredited MSN program – Be a nurse educator in 21 months.
- RNs, finish your BSN in 16 months.
 - Eight week RN to BSN courses; admissions five times a year.
- RN to BSN program ranked #13, MSN ranked #14 most affordable in nation.



enmu.edu/Nursing



Student Success
that's what it's all about



BE IN DEMAND

- DNP – Doctor of Nursing Practice for FNP's
- Online RN-BSN Program (Accredited by the Accreditation Commission for Education in Nursing, Inc. (ACEN)).



www.nwosu.edu/nursing
scwells@nwosu.edu (580) 327-8493



BAKER BUILDS EXPERTS

73% of college nursing educators will retire in the next 10 years.

Who will replace them?



Master of Science in Nursing with two online tracks:

Nursing Education | Nursing Administration

bakerU.edu/MSN



KNAP

Kansas Nurse Assistance Program

What is KNAP?

KNAP is a professional assistance program designed to assist all nurses and mental health technicians who have a problem or illness that has or could impair their ability to practice safely.

The Goal of KNAP

Mental and physical illness, including alcohol and other drug addiction, can potentially impair practice and health. We estimate that at any given time, approximately 10% of the population is affected. This same percentage is thought to be true of healthcare professionals.

Alcohol and other drug addiction, as well as mental and physical illnesses, are treatable. KNAP works with the program participants to obtain an evaluation, treatment (if indicated), and monitoring throughout the recovery process.

Referrals

Self-referrals to the program are encouraged, but referrals may be made by a family member, a friend, employer or anyone concerned about the nurse/LMHT.

Anonymous referrals are not accepted. A person may call for information or advice without giving their name, however. Referrals may be made by calling 913-236-7575.

KNAP Providers

- Confidential services to Kansas RNs, LPNs, and LMHTs experiencing problems and illnesses which could lead to impaired practice.
- Interventions, assessments, referrals for evaluation and treatment (if indicated.)
- On-going monitoring through random urine drug screens, contact with employers and monthly groups.

Causes for Concern

Job Function

- Narcotics discrepancies, e.g.: incorrect counts, alteration of narcotic containers, increased patient reports of ineffective pain control, discrepancies on records or frequent corrections of records, unusual amounts of narcotics wasted, significant variations in the quantity of narcotics ordered for technician's unit or shift.
- Fluctuations in the quality of work performance.
- Irresponsible behavior from someone previously conscientious and responsible.
- Requests to work shifts that are the least supervised.

- Inordinate interest in patients' pain control medications.

Behavior

- Increasing isolation from colleagues, friends and family and avoiding social activities.
- Complaints from others about work performance or alcohol or drug use.
- Mood swings, irritability or depression, or suicide threats or attempts, perhaps caused by accidental overdose.

Physical Symptoms

- Obvious intoxication such as swaying, staggering or slurred speech.
- Odor of alcohol on breath or the excessive use of breath-fresheners or perfume to disguise the odor of alcohol.

KNAP is supported by funds from the Board of Nursing and, in small part, by fees charged to the participants.

For further information

6405 Metcalf Avenue Suite 502
Cloverleaf Complex Building #3
Mission, KS 66202-4086
Ph. #913-236-7575
FAX #913-236-7779
OPEN 8:30 a.m. to 4:30 p.m.
LUNCH 12:00 noon to 1:00 p.m.

Alan Murray, LCSW, LSCSW
Executive Director

Sondra (Sondi) Johnson-Nazario, RN
Program Manager

Camille O'Brien
Program Assistant

**Now Available
Enhanced Shift Differential**

Join the Team at Bothwell
Bothwell has RN openings available. For more information or to apply visit www.brhc.org or email lirwin@brhc.org



GET WELL. STAY WELL. BOTHWELL.

Ashland Health Center
"Your Community Health Center"

JOIN OUR TEAM TODAY!

**NOW HIRING
RN's, LPN's & CNA's**

For inquiries, please contact Darci Hazen
dhazen@ashlandhc.org | 620-635-3103

625 Kentucky St. Ashland, KS 67831 • 620-635-2241




UNIVERSITY OF NORTHERN COLORADO SCHOOL OF NURSING

NURSING REQUIRES PASSION, STRENGTH AND A TOP-NOTCH EDUCATION

- Nursing BS Degree: RN-BS
- Nursing MSN Degree: Adult-Gerontology Acute Care Nurse Practitioner (AGACNP)* or Family Nurse Practitioner (FNP)** Emphasis
- Nursing DNP Degree: Post-Bachelor's with AGACNP* or FNP** Emphasis
- Post-Master's Certificate in AGACNP* or FNP**
- Nursing DNP Degree: Post-Master's*
- Nursing Education (Post Master's Certificate) or PhD Degree*

*The *AGACNP and Post-Master's doctoral programs are online with summer intensives in Greeley, CO; and the **FNP Programs are delivered on-campus one day a week + online.*

EXTENDED.UNCO.EDU/NURSING



Extended Campus



FIND YOUR SMILE AT PRMC!

Looking for Registered Nurses to join our "Simply The Best" Team!

APPLY AT WWW.PRMC.ORG

COFFEY HEALTH SYSTEM
has Registered Nurse Openings



Med-Surg (FT Days 0600 – 1830)
Sunset Manor LTC of Waverly (FT Day/Evening)
OB (FT & PT Nights 1800 - 0630) OB experience preferred
Clinic Nurse or Medical Assistant (FT Days w/Sat. rotation)

Coffey County Hospital holds a CMS 5-star rating
CCH nurses: every 3rd weekend rotation & 3 holidays per year
Sunset Manor-LTC is ranked #3 in Kansas

Applications can be downloaded at coffeyhealth.org.
Send resume/application to Theresa Thoele, Human Resource Director,
801 N. 4th, Burlington, KS 66839 or hr@coffeyhealth.org.

CHS is an Equal Opportunity Employer.

Nursing License Renewal Schedule

If your license expires on: (Please refer to the Check Status of Expiration to verify your expiration date.)	You should receive your yellow renewal notice postcard by:	Your properly completed renewal application should be in the Board office by:
January 31, 2019	November 15, 2018	December 15, 2018
February 28, 2019	December 15, 2018	January 15, 2019
March 31, 2019	January 15, 2019	February 15, 2019
April 30, 2019	February 15, 2019	March 15, 2019
May 31, 2019	March 15, 2019	April 15, 2019
June 30, 2019	April 15, 2019	May 15, 2019

THE FORUM
AT OVERLAND PARK

FIVE STAR
SENIOR LIVING

The Forum at Overland Park, a premiere nursing facility in OP Kansas, has a great opportunity:

Registered Nurse • Licensed Practical Nurse
Awesome Place to Work!!! • Great Differential Pay

The Forum at Overland Park is a 5 Star Senior Living facility, part of a growing company with centers across the country. We offer competitive salaries and attractive benefits.

Apply online at careers.fivestarseniorliving.com or apply in person or by email at:
The Forum at Overland Park
3501 W. 95th St., OP, KS 66206 or TStout@5ssl.com

★ ★ ★ Excellent Benefits for Fulltime ★ ★ ★

good shepherd
HOSPICE

Serving Wichita, Newton and Surrounding Areas

- RN Case Manager/Mon-Fri 8a/5p
- RN Back Up On Call/Fri 5p-Mon 8a/Base+Per Visit Pay
- RN-PRN
- RN on Call/8a-8p/Every Other Weekend
- LPN On Call/Every Other Weekend+2-3 Nights Weekly

FT benefits: 5 weeks paid vacation, paid holidays, health, dental and life insurance, education fund, 401K investment plan with matching, mileage reimbursement.

Reply to: michelle.mosiman@goodshepherdhospice.com or online at www.goodshepherdhospice.com

Kansas State Board of Nursing Joins Nursys

We are pleased to announce that verifications of licensure to another state will now be achieved by a more secure and electronic process! Beginning May 12, 2017 this process will facilitate the turnaround for licensure verification to be sent to a state of your choice via Nursys®.

Nursys® is the only national database for licensure verification for registered nurses (RNs), licensed practical/vocational nurses (LPNs) and advanced practice registered nurses (APRNs). Nursys® is designated as a primary source equivalent database through a written agreement with participating boards of nursing. Nursys® is live and dynamic, and all updates to the system are reflected immediately, pushed directly from participating board of nursing databases through frequent, secured data updates. Nursys®, a 24/7 nationwide database for verification of nurse licensure and discipline, will make licensure verification **immediately** available to the board of nursing where an individual is applying for licensure.

National Council of State Boards of Nursing (NCSBN) provides automatic license status quickly, easily, securely and free of charge to individual nurses who enroll through Nursys e-Notify.

For questions regarding verifications or Nursys, including processing times, visit Nursys.com for instructions and an introductory video.

Correctional care.
COMMITTED CAREERS.

Now hiring!
(Throughout the state of Kansas)

REGISTERED NURSES
LICENSED PRACTICAL NURSES
NURSE PRACTITIONERS

CORIZON
HEALTH™

Contact Jocelyn Lee
jocelyn.lee@CorizonHealth.com | (615) 660-6806

In need of RNs in the following areas:
ICU, SDU, Med Surg, ER, and OR
Sign-on bonus available!

We offer competitive pay and a comprehensive benefits package!

Apply online today!
Contact our HR office for more information,
918.294.4866

hillcrest
Hospital | South

WWW.HILLCRESTHOSPITALSOUTHJOBS.COM
8801 S. 101ST E. AVE. • TULSA, OK 74133

Nursing Instructor
Chanute, KS

Full-Time MSN required or in progress.
At least two years of recent nursing experience.
Additional nursing instructor opportunities may be available.

Paid single employee Medical & Dental KPERs benefits

For a detailed description of the position and instructions for submitting your application, visit our website at www.neosho.edu/Careers. You may also contact Karin Jacobson 620-432-0333 or email hr@neosho.edu

NCCCS is an EOE/AA employer

MNU

Compassionate Nursing

RN-BSN, RN-MSN, MSN or MSN/MBA

Currently seeking approval to offer an MSN-Nurse Practitioner program.

mnu.edu/graduate 913.971.3800

Asbury Park Join the team!
Hiring RN's & LPN's

Come and experience Asbury Park for yourself.
Be prepared to be impressed!

We are now hiring **RN's, LPN's, CMA's & CNA's** for all shifts, Full-Time, Part-Time, and PRN in our Traditional Nursing Environment, Green House Homes, and Assisted Living

Why Work for Us? Our organization offers competitive compensation, flexible scheduling and an excellent benefit package -- you start earning vacation time from day one! However, that is not why our employees stay working with us for decades. As an **Asbury Park Employee**, you are truly a valued contributor to our team. Our team is dedicated to multi-disciplinary partnerships where each truly has a voice in day-to-day operations. It is no wonder why our employees give us high scores in both overall satisfaction and employee engagement. **Our Core Values** are woven into the fabric of our culture and engrained in our team and how we perform our jobs every day. So apply today for one of our available openings.

Please apply online or in person. Drug screen required.

200 SW 14th St. Newton, KS | P: (316) 283-4770
www.asbury-park.org/careers

Asbury Park is an Equal Opportunity Employer and Provider

Unicorn Seeking Unicorn

Immediate Nursing Positions Available

- Full, competitive benefits
- Flexible scheduling
- Paid time off
- 401K matching
- Free CEU's
- And more!

Apply now: craighomecare.com/join-our-team/apply-now
or call Recruitment at 316.264.9990

CRAIG HomeCare
Kids. Our Specialty.

Kansas State Board of Nursing Launches Online Applications

Conveniently manage your nursing licenses online



The week of October 10th the Kansas State Board of Nursing (KSBN) launched their online Kansas Nursing License Portal. The portal is designed to give applicants the ability to apply and pay for their license(s) from the convenience of their home—24 hours a day, seven days a week. The service is available for all professions except mental health technicians.

The goal of the Kansas State Board of Nursing is to provide applicants a more efficient and convenient way to apply for their license. KSBN is very proud to offer this service.

The Online Kansas Nursing License Portal ties into KSBN's current licensing system with its partnership with Systems Automation Corporation, a state government licensing system provider. It allows the user to apply for a Kansas nursing license, verify information, and manage changes to their license electronically. Through its partnership with the Information Network of Kansas, Inc., KSBN's online Kansas Nursing License Portal also allows applicants to securely pay for online services via electronic check or credit card.

To apply for nursing licensure you must have access to the Internet and a checking account or credit card. Applicants who apply online do not have to mail in the license application.

You can visit the Kansas Nursing License Portal www.ksbn.org.

ADDRESS CHANGE

You can use your user ID and password to change your address on-line OR send us the change of address in writing. Please submit within 30 days of address change. You may mail your address change to Kansas State Board of Nursing; 900 SW Jackson St, Ste 1051; Topeka, KS 66612-1230. The Address Change form is available at <https://ksbn.kansas.gov/forms/>.

If you do not have access to a computer please include the following information in your written request:

First and Last Name (please print complete names)

Kansas Nursing License Number(s)

Social Security Number

Old Address and New Address
(complete Street Address with Apt #, City, State, and Zip)

Home phone number and Work Phone number

Date the New Address is in Effect

Sign and date your request

We are unable to accept your request to change your address from information delivered over the phone or via an email. All requests must be received in writing and include a signature.

RN: CAMP NURSE

GENEVA GLEN CAMP in **INDIAN HILLS, Colorado**, will hire **two RN's** for the 2019 Summer season: June 1 – August 10. **GENEVA GLEN** has an excellent reputation and rich heritage. ACA accredited. Compensation includes \$6,000 salary, travel allowance of \$300, insurance, room and board, beautiful, modern health center facility, participation in camp life including horseback riding, swimming, hiking—ideal Colorado climate, healthful working environment (Indian Hills is near Red Rocks). RN graduates welcome!

Contact: **Johnny Domenico**,
P.O. Box 248, Indian Hills, CO 80454, (303) 697-4621 x 13.
Email: johnny@genevaglen.org. Apply online at www.genevaglen.org/nurse

RN/LPN Charge Nurse Position

CAMBRIDGE PLACE
LIFE CARE CENTER

Cambridge Place is currently recruiting for an RN/LPN Position. A busy 65-bed SNF/Assisted Living in Marysville, KS. Strong clinical skills, nursing home and leadership experience preferred. Competitive wages with an excellent benefit package including BCBS, dental, vision, etc.

Please contact Arlene Wessel, RN/Administrator for any questions call 785-562-5321 or e-mail awessel@bluevalleyhealthcare.com.

BREWSTER IN TOPEKA, KS is NOW HIRING FULL TIME RNs & LPNs AND OFFERING A LIMITED TIME SIGN ON BONUS

Benefits offered to full time employees include:

- Major Medical and Dental
- Life Insurance
- Short-Term Disability
- Options to Purchase Supplemental Benefits
- Employee Assistance Program
- 403(b) Retirement Plan
- Paid Time Off
- Holidays

Go to brewsterliving.org to apply today!
785-274-3358

BREWSTER

LIFE CARE CENTER OF BURLINGTON

RN and LPN, Part-time & Full-time

601 Cross St.
Burlington, KS 66839
620-364-2117

www.LifeCareCareers.com

KANSAS MEDICAL CENTER IS HIRING FOR REGISTERED NURSES!

We have fulltime and PRN openings available in these departments, shifts are days 7a-7p or nights 7p-7a

- Intermediate (Pre/Post-Operative)
- Medical Surgical
- Intensive Care
- Telemetry
- Emergency Department
- Operating Room
- Cath Lab

KMC offers superior low cost benefits and competitive pay with up to a 6% dollar for dollar 401K match, 3% of annual salary safe harbor profit share and many more great benefits!

For more info call or go online
316-300-4055
ksmedcenter.com/careers

KANSAS MEDICAL CENTER 1124 W 21st St
Andover, KS

DIRECTOR OF SURGICAL SERVICES Logan County Hospital
Oakley, Kansas

RESPONSIBILITIES INCLUDE

- Managing and coordinating operating room functions; interpreting policies, procedures, standards, and regulations as appropriate
- Performs duties in any nursing capacity as needed
- Possess strong leadership skills and be detail oriented

RN Degree in nursing with two (2) years' experience in medical/surgical in an acute hospital is preferred. Candidate must possess good problem solving skills and the ability to set priorities and make appropriate clinical and supervisory decisions.

As part of Logan County Health Services, we offer excellent wages and benefits including KPERs, Health Insurance, PTO and a paid membership to our Wellness Center.

CHECK US OUT AT
www.logancountyhospital.org for a job application or contact Aimee Zimmerman, COO at 785-672-1333 or email azimmerman@lchoakley.com.

Logan County Health Services is an Equal Opportunity Employer.

LCHS

WCHC Wichita County Health Center
Leoti, Kansas

WCHC is looking for an MDS Coordinator, RN's, LPN's for a 25 bed Critical Access Hospital/15 bed LTC.

Great team, competitive wages, and great benefit packages.
Sign on bonus available for full time.

Come join our family.
Apply online at www.wichitacountyhealthcenter.com
Or call 620-375-2233 Wichita County Health Center
211 East Earl St., Leoti Kansas 67861

WALL CERTIFICATES

Wall Certificates suitable for framing are available through the Kansas State Board of Nursing. Certificates are available to those RNs/LPNs/LMHTs/NPs/CNSs/NMWs/RNAs who hold a permanent Kansas license. To obtain a certificate, please complete the following form.

Name: _____

Address: _____

City: _____

State: _____ Zip Code: _____

Certificate of Qualification (License) Number: _____

Original Date of Issue: _____

Each certificate is \$10.00.

Please submit order form to:

Kansas State Board of Nursing
Landon State Office Building
900 SW Jackson, Suite 1051
Topeka, KS 66612-1230

CONTINUING NURSING EDUCATION OFFERINGS



HOME STUDY

Weight Management Strategies: A Holistic Approach. Spon: Professional Continuing Education, Inc., PO Box 8528, Prairie Village, KS 66208. Contact: Ruthanne Schroeder at Ruthanne@healthcare-pce.com, 913-341-5627. Fac: Sue Popkess-Vawter, PhD, RN. Aud: All levels of nursing. You will learn new strategies for making lifestyle changes that promote healthy weight by developing a daily plan using the cognitive restructuring strategies, Eat for Hunger, Exercise for Life and Esteem for Self. Professional Continuing Education, Inc., is approved as a provider of CNE by the Kansas State Board of Nursing. This course offering is approved for contact hours applicable for APRN, RN, or LPN relicensure. Kansas State Board of Nursing provider number: LT0053-0949. Fee: \$80.00. Contact Hours: 7.5.

The Pathway of Grief: Terminal Diagnoses Through Bereavement. Spon: Professional Continuing Education, Inc., PO Box 8528, Prairie Village, KS 66208, www.healthcare-pce.com. Contact: Ruthanne Schroeder at Ruthanne@healthcare-pce.com, 913-341-5627. Fac: Jody Gyulay, PhD, L.C.S.W., RN. Aud: All levels of nursing. This course will identify the normal grief process from diagnosis through bereavement for the patient, family and care givers. You will see the dying process as a complex journey for both the patient and the family, and you will learn ways to allay their pain and suffering while bringing calm to the dying patient and family. Professional Continuing Education, Inc., is approved as a provider of CNE by the Kansas State Board of Nursing. This course offering is approved for contact hours applicable for APRN, RN, or LPN relicensure. Kansas State Board of Nursing provider number: LT0053-0949. Fee: \$100.00. Contact Hours: 10.0.

About Time: Getting the Right Things Done. Spon: Professional Continuing Education, Inc., PO Box 8528, Prairie Village, KS 66208, www.healthcare-pce.com. Contact: Ruthanne Schroeder at Ruthanne@healthcare-pce.com, 913-341-5627. Fac: Judy Zinn, L.M.S.W.,

C.H.W.C. Aud: All levels of nursing. Time is our most precious resource, this course will provide strategies needed to manage your time effectively and wisely. Professional Continuing Education, Inc., is approved as a provider of CNE by the Kansas State Board of Nursing. This course offering is approved for contact hours applicable for APRN, RN, or LPN relicensure. Kansas State Board of Nursing provider number: LT0053-0949. Fee: \$45.00. Contact Hours: 4.0.

The Truth About Antacids. Spon: Professional Continuing Education, Inc., PO Box 8528, Prairie Village, KS 66208, www.healthcare-pce.com. Contact: Ruthanne Schroeder at Ruthanne@healthcare-pce.com, 913-341-5627. Fac: Lisa Everett Anderson, RPh., FACA, CCN. Aud: All levels of nursing. Learn the truth about one of the most common complaints, acid reflux or GERD, and what is the correct course of action to get permanent relief. Professional Continuing Education, Inc., is approved as a provider of CNE by the Kansas State Board of Nursing. This course offering is approved for contact hours applicable for APRN, RN, or LPN relicensure. Kansas State Board of Nursing provider number: LT0053-0949. Fee: \$15.00. Contact Hours: 1.0.

Assertiveness: New Perspectives. Spon: Professional Continuing Education, Inc., PO Box 8528, Prairie Village, KS 66208, www.healthcare-pce.com. Contact: Ruthanne Schroeder at Ruthanne@healthcare-pce.com, 913-341-5627. Fac: Judy Zinn, L.M.S.W., C.H.W.C. Aud: All levels of nursing. This course will provide strategies needed to assertively manage challenging communication issues with patients, physicians and other members of the health care treatment team. Professional Continuing Education, Inc., is approved as a provider of CNE by the Kansas State Board of Nursing. This course offering is approved for contact hours applicable for APRN, RN, or LPN relicensure. Kansas State Board of Nursing provider number: LT0053-0949. Fee: \$40.00. Contact Hours: 3.3.

Patient Compliance: A New Look. Spon: Professional Continuing Education, Inc., PO Box 8528, Prairie Village, KS 66208, www.healthcare-pce.com. Contact: Ruthanne Schroeder at Ruthanne@healthcare-pce.com, 913-341-5627. Fac: Judy Zinn, L.M.S.W., C.H.W.C. Aud: All levels of nursing. This course will provide information needed to prevent and manage non-compliant patient behavior. Effective patient teaching tools will be shown to enhance patient compliance and foster a working relationship between patients and providers. Professional Continuing Education, Inc., is approved as a provider of CNE by the Kansas State Board of Nursing. This course offering is approved for contact hours applicable for APRN, RN, or LPN

Lincoln Center **LPN or MA**
OBSTETRICS & GYNECOLOGY, P.A. **Full-time**

Seeking mature, motivated, responsible individual to work in a progressive practice.


Excellent Benefit Package!
Experience preferred, but not required.

Send resume to:
2830 SW Urish Rd, Topeka, KS 66614

SANDSTONE HEIGHTS IN LITTLE RIVER


is seeking caring and dedicated nurses and cnas for day shift (6-2) and evening shift (2-10).

Call Liz at 620-897-6266, or email at lizs@sandstoneheights.com for more information, you can also stop by 440 State Street in Little River for an application.


LITTLE RIVER, KANSAS • 620-897-6264

Nursing Careers at Brandon Woods at Alvamar
RN, LPN
New nurses welcome! New training program!


Brandon Woods is a progressive senior living community in Lawrence, KS that values our Team Members and fosters a family oriented, fun and caring environment. Our nursing professionals like working at Brandon Woods.



Here's what they like the most:

- Resident-Centered care and service philosophy and practices that promote quality care
- Dining Services that offer a variety of great choices available throughout the day and night
- Dynamic learning environment with ties to University of Kansas, Geriatric Resource Specialist Program and other continuing education opportunities
- Great pay and benefits
- Consistent, caring leadership that enhances personal growth

BRANDON WOODS AT ALVAMAR **Brandon Woods at Alvamar**
1501 Inverness Drive
Lawrence, KS 66047



Apply online: <http://careers.fivestarseniorliving.com>

Equal Opportunity/Affirmative Action Employer: MIN/FEM/VETS/DIS
Drug Free, Smoke Free Workplace



Wyandot, Inc. is hiring throughout our family of organizations. We provide behavioral health solutions to adults, children, families and those experiencing homelessness in Wyandotte County and beyond.

Benefits include medical, life, 403b savings plan, generous paid vacation and training opportunities. We value diversity, are committed to trauma-informed care and believe in our mission.

Join our team!

www.WyandotCenter.org/Careers

UNIVERSITY OF KANSAS
Doctor of Nurse Anesthesia Practice

- + Entry Level Clinical Doctorate Program
- + For nurses looking for an advanced career in the exciting environment of anesthesia care
- + A challenging discipline requiring the ability to work independently
- + Beyond increased salary: KU graduates enjoy a high rate of job satisfaction in a field in high demand across the state



Accredited by Council on Accreditation and Kansas State Board of Nursing. KU is an AA/EQ/Title IX Institution. Paid for by KU.

KU DEPARTMENT OF NURSE ANESTHESIA EDUCATION
School of Health Professions

See program details at: na.kumc.edu

relicensure. Kansas State Board of Nursing provider number: LT0053-0949. Fee: \$65.00. Contact Hours: 5.4.

Conflict Management: Skills for Uncertain Times. Spon: Professional Continuing Education, Inc., PO Box 8528, Prairie Village, KS 66208, www.healthcare-pce.com. Contact: Ruthanne Schroeder at Ruthanne@healthcare-pce.com, 913-341-5627. Fac: Judy Zinn, L.M.S.W., C.H.W.C. Aud: All levels of nursing. This course will provide skills needed to manage conflict with patients, physicians and allied health professionals. Professional Continuing Education, Inc., is approved as a provider of CNE by the Kansas State Board of Nursing. This course offering is approved for contact hours applicable for APRN, RN, or LPN relicensure. Kansas State Board of Nursing provider number: LT0053-0949. Fee: \$65.00. Contact Hours: 5.5.

The Art of Self-Health. Spon: Professional Continuing Education, Inc., PO Box 8528, Prairie Village, KS 66208, www.healthcare-pce.com. Contact: Ruthanne Schroeder at Ruthanne@healthcare-pce.com, 913-341-5627. Fac: Carol LaRue, OTR/L. Aud: All levels of nursing. This unique course will help you expand personally and professionally, you will increase your knowledge and awareness of the imbalances of illness and disease while learning practical applications and activities to nurture the seven dimensions of well being and recognize the connection between mind, body and spirit. This course is available on-line or by textbook. Professional Continuing Education, Inc., is approved as a provider of CNE by the Kansas State Board of Nursing. This course offering is approved for contact hours applicable for APRN, RN, or LPN relicensure. Kansas

State Board of Nursing provider number: LT0053-0949. Fee: \$65.00. Contact Hours: 6.0.

Superachievers and Coping Strategies. Spon: Professional Continuing Education, Inc., PO Box 8528, Prairie Village, KS 66208, www.healthcare-pce.com. Contact: Ruthanne Schroeder at Ruthanne@healthcare-pce.com, 913-341-5627. Fac: Judy Zinn, L.M.S.W., C.H.W.C. Aud: All levels of nursing. This course will provide strategies needed to manage professional responsibilities without suffering the debilitating effects of perfectionism. Professional Continuing Education, Inc., is approved as a provider of CNE by the Kansas State Board of Nursing. This course offering is approved for contact hours applicable for APRN, RN, or LPN relicensure. Kansas State Board of Nursing provider number: LT0053-0949. Fee: \$35.00. Contact Hours: 2.4.

Tick-Borne Diseases in the United States. Spon: Professional Continuing Education, Inc., PO Box 8528, Prairie Village, KS 66208, www.healthcare-pce.com. Contact: Ruthanne Schroeder at Ruthanne@healthcare-pce.com, 913-341-5627. Fac: Christine Kerns, BA, RN. The incidence of Tick-Borne Disease has skyrocketed, learn the reasons for this increase and the identifying signs and symptoms and treatment approaches. Professional Continuing Education, Inc., is approved as a provider of CNE by the Kansas State Board of Nursing. This course offering is approved for contact hours applicable for APRN, RN, or LPN relicensure. Kansas State Board of Nursing provider number: LT0053-0949. Fee: \$25.00. Contact Hours: 2.0.

BOARD MEETING SCHEDULE

2019 Board Meetings

- March 11, 12, & 13
- June 10, 11, & 12
- September 9, 10, & 11

Tabor College

Tabor College (Hillsboro, KS) seeks Coordinator of Pre-Licensure Nursing Program.

- Duties include teaching, management, and recruiting.
- Preferred start January, regular start July.
- Master's degree required, terminal degree preferred.
- Commitment to teaching/service at a Christian liberal arts college essential.

Full description at <https://tabor.edu/about/employment/>.

Send cover letter, CV, transcripts, and references to facultysearch@tabor.edu.

FHSU DEPARTMENT OF HEALTH AND HUMAN PERFORMANCE

On campus or 100% online

The graduate programs offered by the Department of Health and Human Performance are multi-disciplinary and designed to meet emerging workforce development needs. They are designed to develop advanced professional skill sets in various subject areas.

- Master of Professional Studies, Public Health Administration
- Master of Liberal Studies, Gerontology
- Master of Liberal Studies, Health Science

Please contact **Glen McNeil** for further information at gmcneil@fhsu.edu



FORT HAYS STATE UNIVERSITY
DEPARTMENT OF HEALTH AND HUMAN PERFORMANCE
Forward thinking. World ready.

HELP WANTED



Sedan City Hospital - Serving Southeast Kansas

Registered Nurse: Sedan City Hospital has an opening for a full time Registered Nurse. The shift is 6:30 pm – 7 am, provides shift differential pay, and excellent benefits. SCH is a critical access hospital with a 24 hour Emergency Room located in beautiful southeast Kansas. Applicants must have Kansas license.

Applications are available at 300 W. North Street, Sedan, at www.sedancityhospital.org or send resume to **Lena Duncan, DON**, Sedan City Hospital, PO Box C, Sedan, KS 67361.




MEADOWLARK

Located in Manhattan, KS
Looking for RN's and LPN's to join our team!

WE LOVE OUR NURSES! House Nurse

Come work in a supportive environment where you can utilize your nursing skills and make a difference in the lives of residents, families and team members! Meadowlark is a local not-for-profit organization focused on enhancing senior lifestyles. We want you to join our growing team of employees who are our most valuable asset to achieving our mission of providing high-quality, person-centered care.

Nurses at Meadowlark have a unique opportunity to create genuine relationships with residents while developing their nursing skills. Don't miss the chance to take advantage of our flexible scheduling, favorable staff to resident ratio and competitive wages. To work as a nurse at Meadowlark, you must have a valid Kansas Nursing License.


Call our Human Resources team at (785) 323-3893 to learn more about the opportunity to work with a passionate and people-focused organization. We'd love to have you visit!

You can also learn more about Meadowlark, our history, additional job opportunities or apply at www.meadowlark.org.


JOIN OUR TEAM!

12 Locations across Kansas & Missouri
Nurse Practitioners · Physician Assistants
Registered Nurses

See all of our openings at cccancer.com/careers



Arkansas City · Dodge City · Emporia · Garden City · Great Bend
Liberal · Newton · Salina · Scott City · Wichita · Bolivar, MO · Clinton, MO




Be a partner for lifelong health

Connected by the promise to be a partner for lifelong health, we are dedicated to providing personal, high-quality health and wellness services for the communities we serve in Northeast Kansas. LMH Health offers a great work environment, competitive salary and benefits, flexible schedules in a supported learning environment. We are growing and we invite you to grow with us.

Apply today at www.lmh.org/careers



WHERE THE GRAPES ARE SWEET...
BUT THE OPPORTUNITIES ARE SWEETER!

ATTENTION KANSAS RNs & LPNs:

NOW HIRING:

Experienced RNs and LPNs for STAT Response (last minute needs), Day-to-Day Shifts and Long-Term Contracts in Kansas

- Weekly Pay & Direct Deposits
- Online Scheduling
- Free Credential Monitoring

NOW PAYING:

RNs \$35 - \$47/hr
LPNs \$30 - \$37/hr
at most facilities!*

CALL TO BOOK SHIFTS:
(712) 336-0800

Apply Online Today at www.GrapeTree.com to pick *when* and *where* you want to work - anything from one shift a month to full time!

Lots of Long-Term Care and Hospital RN & LPN Opportunities Available!

APPLY ONLINE TODAY!



GRAPE TREE
MEDICAL STAFFING

grapetree.com

*wage range paid at most facilities

Equal Opportunity/Affirmative Action Employer



With K-TRACS I can:

Interact

with a 24/7, web-accessible, secure database of controlled substance prescriptions for Kansas patients.

Inform

clinical decision-making with a patient's legal controlled substance history in Kansas and PMPi states.

Improve

patient care, safety, education & outcomes through detection, prevention & intervention.

www.ktracs.ks.gov

This ad is sponsored by the Kansas Department of Health & Environment.

WICHITA STATE UNIVERSITY NURSING PROGRAMS

➤ REGISTERED NURSE (RN) TO BSN (fully online)

- Earn your BSN in as little as 1 year
- Get up to 30 credit hours for prior coursework
- Build a foundation for advanced nursing degrees

Application deadline: Dec. 1 for spring; July 1 for fall

➤ MASTER OF SCIENCE IN NURSING (MSN)

This program offers two concentrations:

- Nursing Education (fully online)
- Nursing Leadership and Administration

Application deadline: May 1

➤ DOCTOR OF NURSING PRACTICE (DNP)

Post-BSN Entry: Advanced Practice Registered Nurse (APRN)

Earn specialization in:

- Family Nurse Practitioner
- Adult Gerontology Acute Care Nurse Practitioner
- Psychiatric Mental Health Nurse Practitioner

Application deadline: May 1

DNP Post Master (APRN) (fully online)

Application deadline: Oct. 15

WHY CHOOSE OUR PROGRAMS?

- Online programs offer convenience and affordable in-state tuition
- Individualized faculty advising
- High post-graduation employment rate
- Exceptional success in advanced careers



WICHITA STATE
UNIVERSITY



The baccalaureate degree in nursing, master's degree in nursing and Doctor of Nursing Practice at WSU are accredited by the Commission on Collegiate Nursing Education (<http://www.ccnaccreditation.org>).



FOR MORE INFORMATION CALL (316) 978-3610 OR (800) 516-0290 | WICHITA.EDU/NURSING