

Landon State Office Building, 900 SW Jackson, Ste. 1051, Topeka, KS 66612-1230 | Office Hours: 8:00 am – 4:30 pm | www.ksbn.org

NURSING

Newsletter

Volume 33, No. 2 | June, July, August 2020

The Official Publication of the
Kansas State Board of Nursing

Quarterly circulation approximately 68,000 to all APRNs, RNs, LPNs and Licensed Mental Health Technicians in Kansas.



Est. 1913

N-STAT

Board Meeting Schedule	2
Nurse Statistics	2
KSBN Update	2
Reminders about Continuing Nursing Education	2
Impact of Executive Order No. 20-19 on KSBN Licenses.....	3
Arthur L. Davis Publishing Agency Scholarship Winners.....	3-6
Multi-state Licensure.....	4
Reminders about the Controlled Substance	
Verification Form.....	5
Discipline Cases	7-8
How to Contact Us	9
Board Members	9
Fingerprinting Information for Nursing Applicants	10
IV Therapy Regulations Revised	11-13
Nursing License Renewal Schedule	13
Will CNE be required after NLC?	13
CNE Guidelines for Advanced Practice Nurses.....	14
Continuing Nursing Education Offerings.....	15-16

DISCLAIMER CLAUSE

The Nursing Newsletter is published quarterly by the Kansas Board of Nursing. The providers are responsible for offering quality programs under the criteria as established by the Board. Complaints regarding continuing education programs may be reported directly to the Kansas Board of Nursing. For information on these educational offerings, contact the sponsor, not the Board.

Advertising is not solicited nor endorsed by the Kansas Board of Nursing.

For advertising rates and information, contact Arthur L. Davis Publishing Agency, Inc., 517 Washington St., P.O. Box 216, Cedar Falls, IA 50613, Ph. 1-800-626-4081, sales@aldpub.com. Responsibility for errors in advertising is limited to corrections in the next issue or refund of price of advertisement. Publisher is not responsible for errors in printing of schedule. The Kansas Board of Nursing and the Arthur L. Davis Publishing Agency, Inc. reserve the right to reject advertising. The Kansas Board of Nursing and the Arthur L. Davis Publishing Agency, Inc. shall not be liable for any consequences resulting from purchase or use of advertisers' products from the advertisers' opinions, expressed or reported, or the claims made herein.

current resident or

Presort Standard
US Postage
PAID
Permit #14
Princeton, MN
55371



Thank you

The Kansas State Board of Nursing would like to recognize the contributions that are being made by nurses at all levels during this unprecedented COVID-19 pandemic. The courage that each front-line nurse demonstrates daily is heroic, requiring conquering personal anxiety and fears to provide care to the most vulnerable patients. Those nurses in leadership roles are struggling to make informed decisions, generate plans for our communities when

no rules, guidelines or even adequate supplies exist. Meanwhile, nurses and APRN's continue to provide care for the non COVID illness and emergencies that do not stop just because our nation has a unprecedented infectious event. We applaud your "Can do" spirit, efforts to collaborate with the entire health care team and all State and local agencies that are working together to get Kansas and our nation through these unfathomable times.



KSBN Update

To help prevent the spread of COVID-19, the Board of Nursing and the Landon building was closed to the walk-in public at least through May 3. Like most state agencies and businesses, the majority of KSBN staff are teleworking to perform the functions of the agency. **Due to our high utilization of technology and dedicated staff, functions of the agency continue.** Some functions are interdependent with other entities, such as fingerprinting and NCLEX exams, and may not be business as usual. KSBN continues to work collaboratively to seek solutions, streamline functions and identify any regulatory changes that can be made that will allow KSBN to work to support Kansas nurses. Given that many of our KSBN staff members

are teleworking, the best way to contact them is via their email. You may find our direct agency contacts information listed under [Staff Directory](#) on our website. Please continue to follow our website and social media [[Twitter](#) and [Facebook](#)] and our [COVID-19 Information Center](#) for agency updates and frequently asked questions. For quicker responses, we strongly encourage you to do business with KSBN via our online services located on our [website](#), mail or fax. **KSBN staff are working diligently to continue to carry out the functions of the agency.** We will re-evaluate teleworking practice when we are requested to and it is safe for staff to be back in the agency. Thank you for your support and patience during this difficult and uncertain time.

Reminders about Continuing Nursing Education

- If you have a multi-state license through your primary state of residence, you do not need to maintain a single-state license in Kansas. Your multi-state license allows you to practice in Kansas. You may let your single-state license lapse, so long as you maintain your multi-state license.
- Follow the CNE policy of the state in which you have your multi-state license. For example, if your multi-state license is through Kansas, you are required to obtain 30 hours of approved CNE before renewing your license. If your multi-state license is through Missouri, you would follow Missouri's requirements even if you are working in Kansas.
- 30 hours of approved CNE for renewal of your Kansas single-state or Kansas multi-state license must be obtained within your current renewal period, which are the two years preceding your expiration date. Example: Your license expires 07/31/2020. 30 hours of approved CNE must be obtained between 08/01/2018 and 07/31/2020.
- All college credit must be submitted for approval through the Individual Offering Approval Form. 1 college hour = 15 CNE contact hours
- All CMEs must be submitted for approval through the Individual Offering Approval Form
- **The Individual Offering Approval (IOA) is now submitted electronically.** There are directions with this on our website. The electronic submission has streamlined the process for the nurse and agency staff.
- A list of Kansas providers for CNE, as well as a list of pre-approved National Credentialing Organizations for CNE are available on our website's Education page, under Continuing Nursing Education.

BOARD MEETING SCHEDULE

2020 Board Meetings

- June 15, 16 & 17
- September 14, 15 & 16
- December 7, 8 & 9

NURSE STATISTICS

License Type	Total
Clinical Nurse Specialist	469
Licensed Mental Health Technician	63
Licensed Practical Nurse - Multi-State	346
Licensed Practical Nurse - Single-State	9697
Licensed Practical Nurse - Temporary	30
Nurse Midwife	91
Nurse Practitioner	5009
Nurse Practitioner - Temporary	5
Registered Nurse - Multi-State	4023
Registered Nurse - Single-State	52842
Registered Nurse - Temporary	176
Registered Nurse Anesthetist	1148

Come explore a Nursing Career in Kidney Care.

Openings available throughout Kansas

REGISTERED NURSES & PATIENT CARE TECHNICIANS (CCHT)

Benefits

Paid Training for Non-Dialysis Nurses or Technicians
Tuition Reimbursement
Clinical Advancement Programs
Very Competitive Pay
Best in Class Benefit Package including medical, vision, dental, 401k & MORE!



If interested, please contact our representative below or visit <https://jobs.fmcna.com/>

Ashley Merola
 Recruitment Relationship Manager
 630-926-1060
 Ashley.Merola@fmc-na.com

An Equal Opportunity Employer.



Village Shalom, an Overland Park continuing-care retirement community, has immediate **Director of Nursing and Assistant Director of Nursing and LPN** openings for full-time, part-time and PRN positions.

To learn more and apply, please visit www.VillageShalom.org/Careers.



Now Hiring: Registered Nurses (RN) Licensed Practical Nurses (LPN)

At Herington Hospital our services are growing so rapidly we have a demand for great nurses. Accepting applications for full time, part time, and PRN status. We offer competitive wages and benefits.

Apply online at heringtonhospital.org/careers or for more information call 785-258-5123.

REQUIREMENTS

*Requirements include current licensure in the State of Kansas, IV Certified, BLS, PALS, & ACLS certifications. (Our facility offers these certifications in house)

The Kansas Veterans' Home in Winfield, KS is seeking

CNA's, Med-Aides, LPN's, and RN's

All shifts available, licensing required.

Candidates must successfully pass a background check and drug screen. State benefits include KPERs retirement, paid sick and vacation leave, medical, vision, prescription drugs and dental benefits, and deferred compensation opportunities.

For more information and to apply

Contact Human Resources at (620) 705-6222
 1220 WW II Memorial Drive, Winfield, KS 67156

Apply on-line at: jobs.ks.gov

Impact of Executive Order No. 20-19 on KSBN Licenses

Governor Kelly signed Executive Order No. 20-19 on April 9, 2020. This is to ensure that Kansans who provide important services can continue their work without regulatory interruptions. The following is the information that impacts KSBN licensees:

- All state agencies shall extend renewal deadlines for any professional license issued by a state agency or any board to any individual that was in good standing as of March 12, 2020, and that has expired or will expire during the State of Disaster Emergency, and such licenses shall remain valid until 90 days following the termination of the State of Disaster Emergency
- All state agencies shall waive any late, delinquent, penalty, or expiration fees associated with any license referred to above
- All state agencies shall extend the deadlines for any continuing education requirements mandated by any state agency or any board until 90 days following the termination of the State of Disaster Emergency
- For purposes of this Order, "in good standing" shall include a license that is subject to probation, or non-disciplinary conditions, limitations or restrictions, but shall not include a license that is revoked, cancelled, surrendered, or suspended
- How does this impact KSBN licensees?
- For any licenses, except those revoked, cancelled, surrendered or suspended, as of March 12, 2020 we will extend those renewal deadlines that has expired (March 31, 2020 expiration date) or will expire during the State of Disaster Emergency. These licenses will remain valid until 90 days following the termination of the State of Disaster Emergency. This date has not been announced when this article was written. Watch KSBN website for updates. We will attach a license expiration date when we know the termination date of the State of Disaster Emergency. KSBN will waive any late, delinquent, penalty or expiration fees associated with these licenses.
- KSBN will extend the deadline for any continuing education requirements until 90 days following the termination of the State of Disaster Emergency. This date will be included in an update on our website, when the date is known.

You can continue to renew your nursing license by your normal expiration date, if you choose.

When checking Nursys or KSBN's licensure verification database, all APRN, RN, and LPN licenses, except those revoked, cancelled, surrendered or suspended as of March 12, 2020, will have expiration dates extended to 90 days after the state of emergency ends. Expiration dates will not reflect the extension until the end date of the emergency state is known.



Capper Foundation is working to build abilities and empower people of all ages living with disabilities.

NOW HIRING LPN's

Positions available to work with individuals with disabilities in Winfield, KS.

We offer low patient to nurse ratio, paid training, medical, dental, and vision insurance, 401K, and employer paid life insurance.

Apply online at www.capper.org

For more information contact:
Lynn Phillips at: 620-221-9431
lphillips@capper.org



Arthur L. Davis Publishing Agency Scholarship Winners

What Does Professionalism in Nursing Mean to You?

Elizabeth Jeschke

Professionalism is essential in nursing. It is imperative to keep a professional manner when caring for an individual as a nurse. Professionalism means conducting yourself with accountability, responsibility, integrity, and excellence! Succeeding as a professional nurse means quality care for our patients and a great rapport with our co-workers.

Accountability is so very important. Reading labs, administering medications, and assessing patients are all part of being accountable. As nurses, we are responsible for the wellbeing of our patients. With the demand for nurses it is possible, even likely, your workforce may be working short-staffed. Patients and fellow nursing staff are dependent on your prompt arrival for your shift.

I have been an LPN for 20 years and have continued the legacy of respect I gained from my father, a former nurse. I also am teaching my daughter, who is pursuing nursing through the LPN program, the aspects of professionalism. I have cared for many of my teachers and past employers from high school. They

have appreciated the compassion, respect, and empathy I have shown to them and their family members. Respect and compassion go hand in hand when taking care of patients. This, to me, is definitely a part of professionalism in nursing. So many times, we have the opportunity, through kindness, compassion, and respect, to help in the healing process. A kind word or taking extra time to listen, as well as giving a soothing back rub can do so much for our patients.

There are several opportunities to ensure professionalism in our workplace. The adage, "Dress to Impress," is an easy way to display professionalism. It is important to make sure our uniforms are clean and free of wrinkles. A clean uniform shows attention to detail and a desire for excellence.

As I go back to continue my education to become an RN, I choose professionalism in nursing to shine through my work each day. Throughout patient care, whether it be from birth or to end of life, I must remember professionalism and what it means to me. We should choose kindness, compassion, accountability, responsibility and integrity when caring for our patients to portray professionalism in our careers.

SERVE WITH PURPOSE. DISCOVER COMMUNITY.
BECOME FAMILY.



WE WANT NURSES LIKE YOU!



- > **\$10,000**
Sign-On Bonus Potential
- > **Student Loan Forgiveness**
(Up to \$18,000)
- > **Relocation Packages**
- > **Free boarding for out-of-town RNs**
- > **401K & Tuition Reimbursement**

TAKING CARE OF YOU
SO YOU CAN CARE FOR OTHERS

VISIT www.srhc.com/careers
EMAIL tmodrow@srhc.com
OR CALL 785-452-7026

Multi-state Licensure

The COVID-19 pandemic has caused fear among all of us. Nurses want to help in any way they can, whether in Kansas or in other states. We have received many requests during this pandemic to convert a single state license to a multi-state license. The process to do that conversion has not changed due to the pandemic. **We still must verify the eleven uniform licensure requirements for every multi-state license we issue. This has not changed due to the pandemic.** The eleven uniform licensure requirements include:

1. Meet the home state's qualifications
2. Graduate from qualifying education program (or graduated from a foreign program verified by independent credentials review agency)
3. Passed English proficiency exam, if graduate from a foreign nursing program
4. Pass the NCLEX exam (or state board test pool exam)
5. Have no active discipline on a license
6. Submit to state/federal fingerprint-based criminal background check
7. Not be currently enrolled in an alternative program
8. Self-disclose participation in an alternative program
9. Have no misdemeanors related to practice of nursing as determined by the state board of nursing on a case by case basis
10. Have a valid U.S. Social Security number
11. Have no prior state or federal felony convictions

If you have a multi-state nursing license from your state of residence you can practice nursing in all 34 states that are members of the Nurse Licensure Compact. Information and the application to convert your single state Kansas nursing license to a multi-state nursing license is available on our website. Please ensure you will be able to meet all the eleven uniform licensure requirements before you submit an application for a multi-state license. There are no exceptions for the eleven uniform licensure requirements

NEOSHO COUNTY COMMUNITY COLLEGE

Love the medical field, but tired of the long hours? Consider the online HIT program! Nursing license considered towards prior learning credit.

Contact:
jen.smith@neosho.edu
620.432.0323
www.neosho.edu

*Arthur L. Davis Publishing Agency
Scholarship Winners*

What Does Professionalism in Nursing Mean to You?

Janice Levina

Professionalism is a crucial part of the nursing role; this is due to its powerful effects on the quality of care that patients receive and on functioning of the unit as a whole. With the continued expansion of the nursing profession in scope and recognition, maintaining trust within each patient relationship is important in preserving a positive image, and can set a precedent for the level of trust that patients feel towards the healthcare industry. It is therefore highly important for nurses as individuals to always represent their profession in the best way possible. I believe that displaying personal accountability and engaging in ethical practice are two essential qualities of a nurse who is displaying professionalism in the workforce.

Being ethical and unbiased in the healthcare setting can be implicated in almost all areas of nursing, and can have a profound difference in the patient's experience. Our personal views are ingrained into our subconscious, and can affect the way that we interact with people, and even how we provide care. In order to ensure that every patient receives equal, quality care, we must become aware of our biases to perform our duties in a sensitive manner that is focused around the patients and their needs. Nurses have a responsibility to offer patients evidence-based information and care, and it is the right of the patient to be able to utilize this information how they wish. It is important to uphold that image of nursing as a provider of care, rather than as someone who is imposing their ideals onto others' health decisions. A nurse performing unethically to even one individual could have a lasting, detrimental effect on the entire nursing image, or could even cause patients to feel pressured into making healthcare decisions that they are not comfortable with. Being unbiased often requires people to push aside their conflicting viewpoints in order to be able to understand the needs of their patients and to be able to treat people of all backgrounds equally. Therefore, awareness of personal values and biases could help nurses to practice quality nursing care in a more ethical and unbiased way, while also contributing positively to the entire profession.

Another vital trait that professional nurses should possess is personal accountability. This is applicable to nurses' responsibility to their colleagues, patients, and themselves.

Accountability among colleagues is critical for all professions in order to promote a positive work environment and increase productivity. By diligently partaking in practices such as arriving on time to every shift, following through on commitments, and stepping up to help fellow colleagues, nursing professionals can exhibit personal accountability and therefore bolster teamwork and efficiency. It can help to reassure other nurses that they can rely on their team members, and can encourage them to reciprocate the same support that they are receiving. Displaying accountability towards patients is a way that nurses can show that they truly care about providing excellent care for patients and their family members. This means that nurses should be mindful of timeliness and accomplishment of patient care activities, maintain a trusting and respectful relationship with patients, and keep their clinical knowledge updated in order to provide patients with the most reliable information available. These will all show that the nurse is a hardworking, dedicated member of their profession who sincerely cares about providing great care. Another way to promote personal accountability is to ensure that nurses are meeting their own personal needs. By practicing self-care and being aware of their own well-being, nurses are better able to provide the best version of themselves on the unit. They would be better able to utilize their full energy towards their colleagues, patients, and betterment of their profession, and can therefore exhibit higher levels of professionalism through their actions.

Nurses must provide ethical care and display personal accountability in order to exhibit higher levels of professionalism in their practice. Remaining reliable for colleagues and patients creates a more trusting, efficient, and collaborative environment throughout the unit, and can have a huge influence on how the profession functions collectively. Awareness of biases and performing care following ethical guidelines can help in ensuring that all patients are equally treated with respect and excellence. Although professionalism in nursing can be embodied through many types of efforts and admirable traits, I believe that having personal accountability and providing ethical care is essential for nurses in promoting themselves as professionals, and building up the nursing profession as a whole.

DON'T WAIT FOR OPPORTUNITY. CREATE IT. ENROLL NOW.

Enroll in an online nursing degree program that's designed to fit your schedule and budget.
OFFERING RN TO BSN AND MSN ONLINE

Denver College of Nursing

(866) 864-6633
www.denvercollegeofnursing.edu

DCN is accredited by the Higher Learning Commission (HLC), (www.hlcommission.org) (800-621-7440). Our associate and baccalaureate programs are accredited by the Accreditation Commission for Education in Nursing (ACEN), 3343 Peachtree Road NE, Suite 850, Atlanta, GA 30326 (404-975-5000).

FOR CONSUMER INFO VISIT WWW.DENVERCOLLEGEONURSING.EDU

Gallup Indian Medical Center

Now, more than ever, we appreciate and value your
compassionate and loyal care to our community.

Thank you!

We are hiring Registered Nurses!

79 Bed, Baby Friendly, Trauma III designated hospital
bordering the Navajo Nation in Gallup, NM.

*Med/Surg, OB/L&D, ICU, Ambulatory Care, ER, Peds, Periop
& other specialty positions available.*

We offer:
Competitive Salaries
Relocation
Recruitment/Retention Incentives
Loan Repayment

Contact: Myra Francisco, RN – Nurse Recruiter
505.726.8549 | myra.francisco@ihs.gov
<http://bit.ly/GSU-RN>

I.H.S. is required by law to give absolute preference to qualified Indian applicants. Equal Opportunity Employer.

Arthur L. Davis Publishing Agency Scholarship Winners

What Does Professionalism in Nursing Mean to You?

Katey Weishaar

Professionalism in nursing embodies many different meanings for me. This is not just something that you can learn from textbooks. It is a combination of on the job training, what you learn from your peers, life experiences, and your own moral compass. A true representation of professionalism in nursing comes from the way you carry yourself, the amount of respect and compassion you give to others, and the way you provide the highest standard of care possible.

I have worked in the healthcare field for four years. During that time, I have had the pleasure of working with true professionals. These individuals, whom I now consider to be peers, have begun mentoring me to reach my true potential. They have taught me to rely on my own moral compass and life experiences to give respect and compassion to everyone I come in contact with.

My life experiences have encouraged me to become a professional in this career field. I have a six year old daughter whom has had medical issues since birth, and has endured multiple surgeries. During our time in the hospital, I had the pleasure of meeting nurses who were true professionals. These nurses were the kindest, most compassionate people I have ever met. Even though we were complete strangers to them, they were just as emotionally invested as I was. They showed us grace, compassion, and empathy. When I experienced that, I knew I had found my true calling in life. I hope I can one day return the favor to another young mother by being that kind of professional.

Professionalism in nursing encompasses the way you carry yourself, the respect and compassion you show to others, and the judgments you make. As a professional you should always strive to surpass all expectations that are set. If you only meet the standard, you have not only failed your patient but you have also failed yourself. To consider myself a professional, I will always go above and beyond what is required of me. The goal of a professional is to make a positive change in every person's life that they are put in contact with.

As nurses in the healthcare field, we will come in contact with individuals on some of the worst days of their lives. By acting and conducting ourselves in the utmost compassionate and professional way, we can help ease the pain of not only patients, but their families as well. By taking what we learn from other healthcare professionals, adding on the job training, along with our own experiences, we can truly become the best professionals that we were meant to be.



Reminders about the Controlled Substance Verification Form

What is this form?

- K.S.A.65-1130 (d) states an APRN may prescribe drugs pursuant to a written protocol as authorized by a responsible physician. Each written protocol shall contain a precise and detailed medical plan of care for each classification of disease or injury for which the APRN is authorized to prescribe and shall specify all drugs which may be prescribed by the APRN. In order to prescribe controlled substances, the APRN shall (1) register with the federal drug enforcement administration; and 2) notify the board of the name and address of the responsible physician or physicians. For the purpose of this subsection, "responsible physician" means a person licensed to practice medicine and surgery in Kansas who has accepted responsibility for the protocol and the actions of the APRN when prescribing drugs. The federal drug enforcement administration requires verification of information and drug schedules from the Kansas State Board of Nursing before a DEA license will be issued. The Controlled Substance Verification Form (CSVF) contains the information we need to verify with the DEA.

Who needs to submit this form?

- Any APRN that has a written protocol with a responsible physician that authorizes the APRN to prescribe controlled substances

How often do I need to submit this form?

- When the written protocol is initiated and you need a DEA license and when there have been any changes to the information that was submitted (examples: change in responsible physician, change in schedules of controlled substances, etc.)

Where is this form?

- It is located under the forms tab on our website. It will be changing to an electronic submission soon. There are directions with the form.

Who can I contact if I have questions?

- If you have questions after reviewing the directions on our website with the CSVF, you can contact chelsey.stephenson@ks.gov

AN EXCEPTIONAL CAREER Join a Five Star Team!

Founded in 2000, Five Star Senior Living is a national healthcare and senior living provider with almost 300 communities and more than 25,000 team members... and we're growing! Five Star is proud to be a publicly traded and financially sound company. Five Star has two major operating divisions: Five Star Senior Living and Ageility, which offers rehabilitation services.

With a focus on Warmth & Hospitality, Dining & Nutrition, and Health & Wellness, team members make every day exceptional for the amazing people who have chosen to make this their home.



- Opportunities for Advancement
- Competitive Pay and Benefits (cash for unused PTO)
- Tuition Reimbursement
- 401K Retirement Savings Plan (with company match)
- Team Member Assistance Program

- Discount Programs (including cell phone)
- Community Safety Awards
- Paid Administrator and Executive Director in Training Programs

AND THE CHANCE TO MAKE A DIFFERENCE, EVERY MOMENT OF EVERY DAY.

BRANDON WOODS
AT ALVAMAR



Brandon Woods at Alvar
1501 Inverness Drive | Lawrence, KS 66047

Apply online:

<http://careers.fivestarseniorliving.com> or
www.brandonwoods.com

Equal Opportunity/Affirmative Action Employer: MIN/FEM/VETS/DIS Drug Free, Smoke Free Workplace

Northwestern™

OKLAHOMA STATE UNIVERSITY

Northwestern Nursing is recognized by NursingSchoolsAlmanac.com and GreatValuesColleges.net as one of the best all-around nursing schools in the central United States for quality, convenience, satisfaction, and value.

nwosu.edu/school-of-professional-studies/nursing

BSN | 580-327-8493
DNP | 580-327-8442

With four sites available in Alva, Enid, Woodward, and Ponca City, plus online courses, learning close to home is easy.

The online RN-to-BSN is a 12-month online program with no traditional clinical hours requirement and no campus visit requirements.

The BSN-to-DNP Family Nurse Practitioner program is a hybrid model offering online classes, limited campus visits, and local clinical practicums.

Arthur L. Davis Publishing Agency Scholarship Winners

What Does Professionalism in Nursing Mean to You?

Savanna Carrasco

As an individual who is learning to practice nursing, I think that professionalism is an utmost need. When I think of professionalism, three important values come to mind. Those values are accountability, responsibility, and compassion. I know when it comes time to make decisions and take action to satisfy the needs of a patient, numerous values should come into play. As someone who is entering this profession, I believe these three values are significant.

Having accountability holds nurses to a higher standard of providing care. Accountability is showing up on time and being prepared to give the most effective

care possible. Nurses show accountability when they show responsibility for their actions, making those actions answerable. Part of being accountable is always putting a patient's needs first, which at times can be difficult. Occasionally, nurses will disagree with a physician's plan of care regarding a patient, so advocating for a patient is necessary. Nurses need to advocate for a patient since they are the ones that are giving a patient one on one care around the clock.

Responsibility and accountability go hand in hand with each other. The difference between the two is that accountability cannot be shared, but responsibility can be. Nurses have many responsibilities, one of which is protecting a patient's dignity. Having patience and empathy towards a patient will help protect their dignity. Communicating

effectively is another big responsibility. Nurses need to make sure a patient understands what is going on with them and what their plan of care may be. On the legal side of responsibility, it is essential that nurses document everything they have done accurately and precisely. This especially includes when administering medications. Nurses have the responsibility of doing a medication check three times, to make sure they are following the six rights.

Lastly, having compassion is an essential need for nurses. They should have true compassion when caring for a patient. True compassion is being able to be empathetic and sympathetic while having the desire to alleviate a patient's pain or suffering. Being compassionate helps a patient become comfortable with their nurses while they are emotionally and physically dealing with a stressful situation. Being compassionate helps with the effectiveness of communication between a patient and a patient's family in any situation. Having that communication with a patient can help relieve their concerns and help them focus on getting well.

In conclusion, I know there is more to professionalism in nursing other than the three values I touched on, which are accountability, responsibility, and compassion. These three values are what stick out most to me as an individual who is learning to practice nursing. To me, these three values are what ensure the safety and well-being of a patient.



“Nurses make a difference. Their commitment and compassion make me proud to work alongside them.”

— Hal Taylor, MD,
LMH Health Hospitalist

Be a partner for lifelong health

At LMH Health, our promise is to be a partner for lifelong health. To provide excellent outcomes for our patients, we are dedicated to working better together. LMH Health offers:

- Competitive salary and outstanding benefits
- Flexible schedules that promote a work-life harmony
- Internal career growth opportunities
- Tuition reimbursement

LMH Health is growing – come grow with us!

Apply today at www.lmh.org/careers.



A partner for lifelong health



Visit nursingALD.com today!

Search job listings

in all 50 states, and filter by location and credentials.

Browse our online database
of articles and content.

Find events
for nursing professionals in your area.

Your always-on resource for nursing jobs, research, and events.



DISCIPLINE CASES

Drug & Alcohol

Stephanie Blair
Wichita, KS 67203
License # 13-62594-062
Case # 19-704-5
License Suspended 1/27/2020

Taylor Moss
Hugoton, KS 67951
License # 23-46319-072
Case # 17-2084-1
License Suspended 2/3/2020

Jamie Miller
Salina, KS 67401
License # 13-132820-101
Case # 19-554-3
License Revoked 2/21/2020

Michelle Andregg
Plainville, KS 67663
License # 13-99095-122
Case # 11-898-3
License suspended Indefinitely 3/2/2020

Rusty Galbraith
Bucyrus, KS 66013
License # 13-108935-112
Case # 18-1405-7
License Fined 3/2/2020

Miranda Lara
Scott City, KS 67871
License # 13-115569-101
Case # 18-1548-2
License Suspended 3/2/2020

Julie Grant
Overland Park, KS 66210
License # 13-130269-032
Case # 19-211-7
License Revoked 3/3/2020

Anna Funk
Wichita, KS 67212
License # 13-116343-011
Case # 18-1389-5
License Suspended 3/9/2020

Stephanie Ko
Derby, KS 67037
License # 23-40734-041
Case # 15-1325-5
License Suspended 3/23/2020

Fraud or Deceit
Crystal Oneal
Yukon, OK 73099
License # 14-149675-021
Case # 19-1514-0
License Suspended Indefinitely 1/10/2020

Penny Freeman
Wichita, KS 67206
License # 13-82367-091
Case # 18-2002-5
License Revoked 3/2/2020

Kelly Taylor
Vista, CA 92083
License # 24-51224-092
Case # 2020-83-0
License Suspended 3/2/2020

Mary Baer
Lees Summit, MO 64081
License # 14-136618-081
Case # 2020-84-0
License Suspended 3/2/2020

Unprofessional Conduct
Lauren Taylor
Lenexa, KS 66220
License # 14-132185-081
Case # 17-1453-8
License Reinstatement Denied 12/29/2019
Crystal Tinch
Lawrence, KS 66049
License # 23-24179-112
Case # 18-1668-7
License Surrender/Revoked 1/22/2020

Joshua Brandt
Winfield, KS 67156
License # 13-147325-071
Case # 19-951-6
License Restricted 1/27/2020

Sydney Heitman
Overland Park, KS 66214
License # 14-120117-031
Case # 18-1667-7 & 18-2076-7
License Revoked 1/27/2020

Larmenki Sellers
Platte City, MO 64079
License # 23-36347-032
Case # 13-1255-7
License Reinstatement Denied 1/27/2020

Wanda Harris
Kansas City, KS 66112
License # 23-7076-052
Case # 18-2003-7
License Suspended 30 days 1/27/2020

Judy Njunge
Kansas City, MO 64108
License # 23-46754-072
Case # 18-955-7
License KNAP 2/10/2020

Katelyn Hiracheta
Spring Hill, KS 66083
License # 14-129953-071
Case # 15-1964-8
License Public Censure 2/10/2020

Bobbi Miller
Pratt, KS 67124
License # 16-90577-021
Case # 17-1623-4
License Suspended 2/10/2020

Katherine Carnahan
Lawrence, KS 66049
License # 13-116570-111
Case # 19-1283-08
License Limited 2/17/2020

Brittney Zettl
Mulvane, KS 67110
License # 13-124016-041
Case # 16-1986-5
License Limited 2/17/2020

Kristi Richerson
Gardner, KS 66030
License # 13-139574-111
Case # 18-2004-7
License Suspended 2/17/2020

Discipline Cases continued on page 8



Offering Great Opportunities Around the State!
Cornerstone Employment Solutions – agency shifts state-wide
OR

Full- and Part-time Opportunities in our communities....

Bonner Springs Health and Rehab – Bonner Springs, KS

Cherryvale Living – Cherryvale, KS

Clearwater Health and Rehab & Clearwater Village – Clearwater, KS

Fountainview Health and Rehab – Rose Hill, KS

Legacy on 10th Avenue – Topeka, KS | Orchard Gardens – Wichita, KS

Apply online www.cornerstonehcs.org or send your resume to HR@cornerstonehcs.org!



The Shepherd's Center
101 Cedar Ridge
Cimarron, KS 67835
620-855-3498



Opening for RNs and LPNs

Located in the Cedar Ridge subdivision of Cimarron, Kansas, the newly constructed The Shepherd's Center offers the same loving and attentive 24 hour nursing care that we have provided to our residents for more than 24 years, only now in a beautiful new home-like setting.

Applications can be emailed to kyrahdon@ucom.net or call 620-640-5801 and ask for Kyra, Director of Nursing.

- New facility
- Home like atmosphere
- Great benefits
- New pay rates with differentials and incentives

Now Hiring in our Skilled Nursing and Long Term Care Health Care Center!

Work for a 5 Star Health Care Facility



- Excellent pay and benefits
- Quality focused team
- Career Development Opportunities

Join our amazing team!



LARKSFIELD
PLACE
a community for living



316.636.1000

7373 E. 29th St. North • Wichita, KS 67226

www.larksfeldplace.org/careers



DISCIPLINE CASES

Discipline Cases continued from page 7

Colleen Brooks
Ore City, TX 75683
License # 23-20949-061
Case # 18-953-7
License Suspended 2/14/2020

Summerdawn Warren
Sedgwick, KS 67135
License # 23-49017-052
Case # 19-692-5
License Limited 3/2/2020

Lori Sidebottom
Wichita, KS 67204
License # 13-140562-012
Case # 18-1934-5
License Suspended 3/2/2020

Pascal, Ochieng
Wichita, KS 67207
License # 23-39654-042
Case # 2020-9-0
License Revoked 3/2/2020

Christine Mensch
Lawrence, KS 66044
License # 14-63173-022
Case # 19-350-7
License Public Censure 3/2/2020

Laura Campbell
Arkansas City, KS 67005
License # 23-47272-081
Case # 19-285-6
License Revoked 3/2/2020

Jennifer Klote
Ogden, KS 66517
License # 13-67518-122
Case # 18-1609-9
License Limited 3/9/2020

Mary Barba
Topeka, KS 66605
License # 23-36338-082
Case # 14-1360-8
License Suspended 3/9/2020

Tiffany Smith
Osawatomie, KS 66064
License # 13-128709-091
Case # 16-2015-8
License Revoked 3/10/2020

Quinn Ottley
Oakley, KS 67748
License # 13-120336-102
Case # 19-739-2
License Public Censure 3/9/2020

Kristi Richerson
Gardner, KS 66030
License # 13-139574-111
Case # 18-2004-7
License Limited 3/18/2020

Elizabeth Mackay
Wichita, KS 67220
License # 13-105001-081 &
53-77590-01
Case # 18-1434-4
License Fined 3/13/2020

Jessica Morris
Haysville, KS 67060
License # 23-49987-041
Case # 19-548-5
License Suspended 3/16/2020

David Young
Marquette, KS 67464
License # 13-108879-011
Case # 18-1898-3
License Public Censure 3/17/2020

Unlicensed Practice
Jana Blank
Sedgwick, KS 67132
License # 13-76071-081
Case # 2020-41-4
License Administrative Fine 1/23/2020

Benjamin Heinlein
Kansas City, MO 64110
License # 13-67378-011
Case # 2020-1-9
License Administrative Fine 1/2/2020

Jackie Broyles
Blue Mound, KS 66010
License # 13-68422-121
Case # 2020-96-6
License Administrative Fine 2/13/2020

Michelle L Smith
Manhattan, KS 66502
License # 13-131880-111
Case # 2020-91-9
License Administrative Fine 2/6/2020

Trinda Chase
Waterville, KS 66548
License # 23-31460-081
Case # 2020-81-9
License Administrative Fine 2/6/2020

Trisha L Smith
Minneapolis, KS 67467
License # 13-107788-101
Case # 2020-95-3
License Administrative Fine 2/13/2020

Kellie Werner
Hays, KS 67601
License # 13-71828-111
Case # 19-347-3
License Public Censure 3/2/2020

Alma Ibarra
Arkansas City, KS 67005
License # 23-48132-091
Case # 2020-80-6
License Public Censure 3/2/2020



Nancy and Clint

Become part of a culture that encourages growth and embraces who you are. Imagine a career with competitive compensation, on-site childcare and tuition reimbursement. Experience all this and more at North Kansas City Hospital. Explore our opportunities.

Acute Rehab | Cath Lab | Critical Care
Labor/Delivery | Orthopedics | Progressive Care

The best jobs point north.
NKCHjobs.org



How to Contact Us: 785-296-4929



ADMINISTRATION 785-296-5752

Carol Moreland, MSN, RN Executive Administrator	carol.moreland@ks.gov	785-296-5752
Adrian Guerrero Director of Operations	adrian.guerrero@ks.gov	785-296-5935
Jill Simons Executive Assistant	jill.simons@ks.gov	785-296-5752

EDUCATION 785-296-3782

Janelle Martin, MHSA, BSN, RN Education Specialist	janelle.martin@ks.gov	785-296-5036
Chelsey Stephenson, Education Secretary	chelsey.stephenson@ks.gov	785-296-3782
Vacant		

LEGAL DIVISION DISCIPLINE 785-296-4325

Bryce Benedict Assistant Attorney General	bryce.benedict@ks.gov	785-296-4325
William Skepnek Assistant Attorney General	william.skepnek@ks.gov	785-296-4325
Victoria Bond Senior Administrative Assistant	victoria.bond@ks.gov	785-296-4325

INVESTIGATION 785-296-8401

Linda Davies, BSN, RN Practice Specialist	linda.davies@ks.gov	785-296-8401
Beth Peters, RN RN Investigator III		
Beth Peters, RN RN Investigator III		
Vacant		
Vacant		
Mickie Walker, RN RN Investigator III	mickie.walker@ks.gov	785-296-4325
Debra Quintanilla, RN RN Investigator III	debra.quintanilla@ks.gov	785-296-4325
Ruth Humbert, RN RN Investigator III	ruth.humbert@ks.gov	785-296-4325
Kevin Wade, RN RN Investigator III	kevin.wade@ks.gov	785-296-4325
Vacant		
Vacant		

LICENSING

RaeAnn Byrd Licensing Supervisor	raeann.byrd@ks.gov	785-296-6573
Barbara Bigger Senior Administrative Assistant Reinstatements & Renewals	barbara.bigger@ks.gov	785-296-2926
Karen McGill Senior Administrative Assistant RN & LPN Applications/NCLEX	karen.mcgill@ks.gov	785-296-2453
Vacant		
Jackie Mercer Senior Administrative Assistant Front Desk Reception	jackie.mercer@ks.gov	785-296-2967

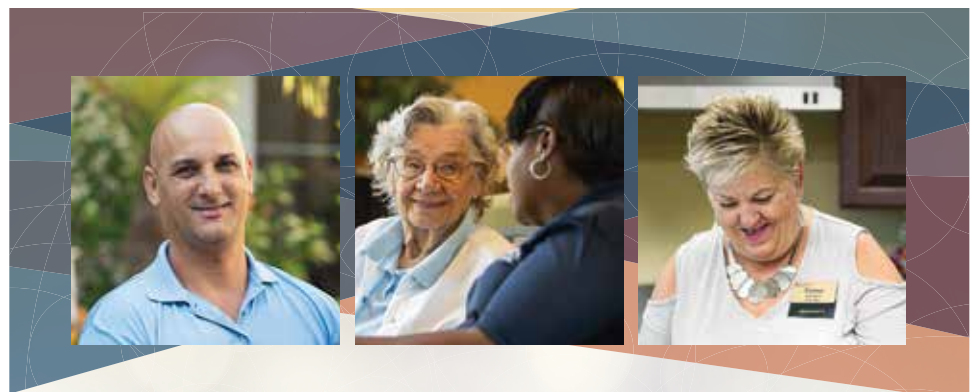
INFORMATION TECHNOLOGY

Kolton Colhouer eGov Support Analyst	kolton.colhouer@ks.gov	785-296-2240
Anthony Blubaugh Applications Developer	anthony.blubaugh@ks.gov	785-296-3928



Board Members

Patricia Zeller, MSN, APRN, NP-C, President 07/18/14-06/30/22 patricia.zeller@ks.gov
Carol Bragdon, PhD, APRN, Vice President 07/01/17-06/30/21
Julianna Rieschick, RN, MSN, NEA-BC, Secretary 07/01/17-06/30/21
JoAnn Klaassen, RN, MN, JD 07/01/16-06/30/20
Rebecca Sander, MSN, RN 07/28/2016-06/30/2020
Gwendolyn Loyd, BSN, RN 7/1/2019-6/30/2023
Gita Noble, Public Member 7/1/2018-6/30/2022
Jade Ramsdell, Public Member 7/1/2019-6/30/2023
Mandy Karstetter, LPN 07/01/2017-06/30/2021
Tracie Thomas, Public Member 01/08/2019-06/30/2020
Vacant



NOW HIRING NURSING STAFF

Are you interested in joining a Certified Great Place To Work?

\$1,500 Sign-On Bonus*

Do you want to serve seniors in a friendly, professional and supportive company that has received the NRC Employee-Approved Award and certified as a Great Place To Work two years in a row?

VISIT LSLCAREERS.COM TO COMPLETE YOUR APPLICATION.

**Bonus is paid 50% on first day; 50% after 90 days.*



LegendSeniorLiving.com



Fingerprinting Information for Nursing Applicants

The COVID-19 crisis has impacted the Board of Nursing in many ways. The State of Kansas partners with State, County and Local law enforcement centers to perform the criminal background check, fingerprinting services for our applicants. Many of these centers closed their public access to professional licensing agencies due

to the social distance requirements and lack of PPE for their staff performing the fingerprinting procedures. The Board of Nursing has worked promptly and diligently to secure locations that are willing to fingerprint our critical nursing applicants. The map designates counties that have agreed to fingerprint for Kansas nurses as of this publication. For the most up-to-date fingerprint locations, please visit our COVID-19 Information Center website at <https://ksbn.kansas.gov/covid-19/> Please be sure to follow all instructions and bring any required information to each site. The Board of Nursing extends a big **"THANK YOU"** to all of the Sheriff Office's in Kansas

on our list, for providing this extremely important service for our nursing applicants!

Adrian R. Guerrero, CPM
 Director of Operations
 Kansas State Board of Nursing
 900 SW Jackson, Suite 1051
 Topeka, KS 66612
 Phone: 785-296-5935
 Fax: 785-296-3929
 Email: adrian.guerrero@ks.gov
 Twitter: [www.twitter.com/ksnursingboard](https://twitter.com/ksnursingboard)
 WebPage: <https://ksbn.kansas.gov/>

Kansas Aging and Disability Resource Center has the information and resources your patients need during these challenging times. Our friendly team specializes in community services for older adults, caregivers and individuals with disabilities –*How Can We Help?*

Call 855-200-2372 or [click here for a live chat.](#)

KANSAS AGING & DISABILITY CALL CENTER

MEADOWLARK
 Located in Manhattan, KS

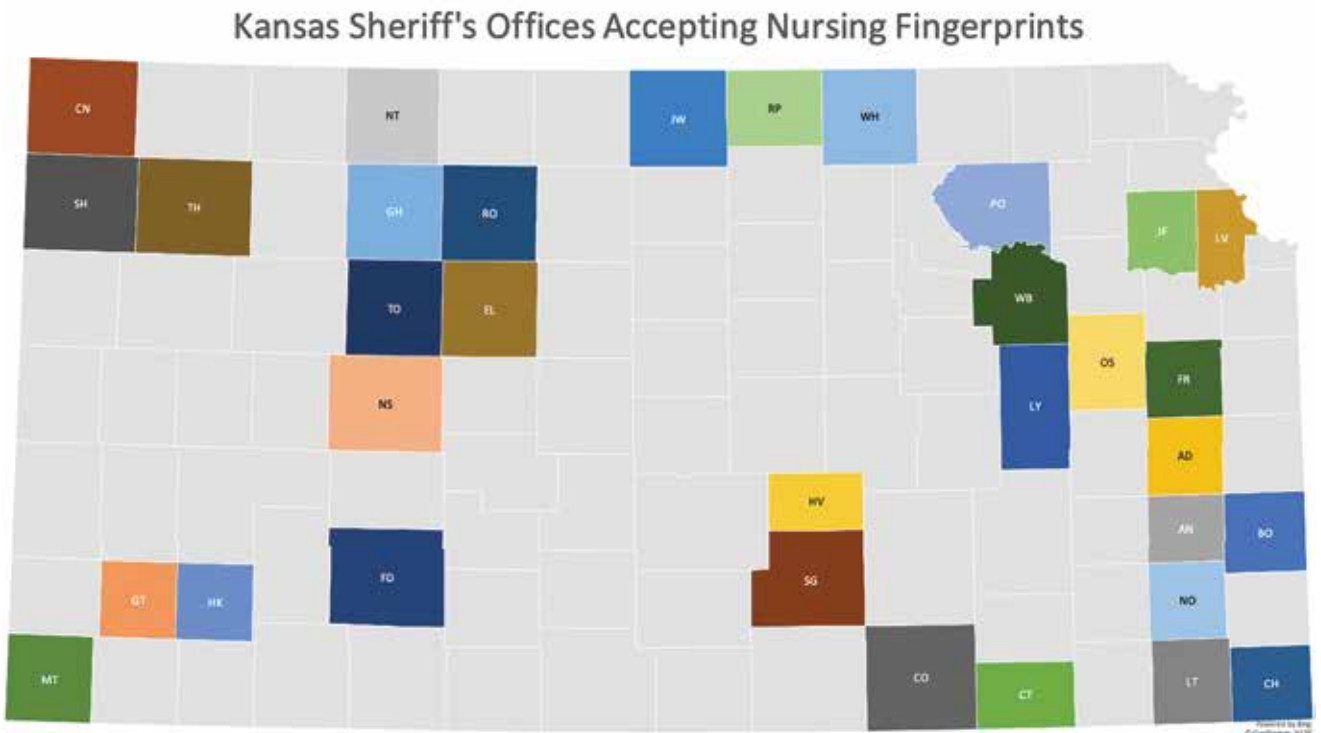
WE LOVE OUR NURSES!
 RNs and LPNs join our team!

Nurses at Meadowlark have a unique opportunity to create genuine relationships with residents while developing their nursing skills. Don't miss the chance to take advantage of our flexible scheduling, favorable staff to resident ratio and competitive wages. To work as a nurse at Meadowlark, you must have a valid Kansas Nursing License.

Call our Human Resources team at (785) 323-3892 to learn more about the opportunity to work with a passionate and people-focused organization.

We would love to have you visit!

You can also learn more about Meadowlark, our history, additional job opportunities or apply at www.meadowlark.org/jobs



CLAY CENTER
 Presbyterian Manor

Health Services - RN/LPN & Health Services Supervisor

Are you or someone you know passionate about healthcare, working with seniors, and ready to be part of a dedicated healthcare team? **Come join us!**

Presbyterian Manor of Clay Center, a not-for-profit senior living community, is seeking a full-time Health Services - RN/LPN to provide quality health care to our seniors. Competitive wage and excellent benefit package.

Apply at claycenterpresbyterianmanor.org

UNIVERSITY OF KANSAS
 Doctor of Nurse Anesthesia Practice

- + For nurses looking for an advanced career in the exciting environment of anesthesia care
- + Beyond increased salary: KU graduates enjoy a high rate of job satisfaction in a field in high demand across the state

KU DEPARTMENT OF NURSE ANESTHESIA EDUCATION
 School of Health Professions

Accredited by Council on Accreditation and Kansas State Board of Nursing. KU is an AA/EQ/Title IX Institution.
 See program details at: na.kumc.edu



Could it be COPD?

More than 16 million people in the U.S. have been diagnosed with COPD, and millions more do not realize they may have it. If you have patients who are experiencing any of the following symptoms, consider a spirometry test:

- ongoing cough
- shortness of breath
- wheezing
- chest tightness
- excess mucus production

TALK TO YOUR PATIENTS ABOUT THEIR RISK FOR COPD.

Free provider and patient resources can be found at **nhlbi.nih.gov/breathebetter**



**LEARN MORE
 BREATHE BETTER**

IV THERAPY REGULATIONS REVISED

Effective January 17, 2020 there are some revisions to the IV Therapy Regulations. There are now two options: having a stand-alone IV therapy course or putting the content into the curriculum of a Practical Nursing Program. Here are the revised regulations, K.A.R. 60-16-101, 60-16-103 and 60-16-104:

60-16-101. Definitions. Each of the following terms, as used in this article of the board's regulations, shall have the meaning specified in this regulation:

- a. Administration of intravenous (IV) fluid therapy" means utilization of the nursing process to deliver the therapeutic infusion or injection of substances through the venous system.
- b. "Admixing" means the addition of a diluent to a medication or a medication to an intravenous solution.
- c. "Calculating" means mathematically determining the flow rate and medication dosages.
- d. "Clock-hour" means 60 continuous minutes.
- e. "Competency examination" means a written examination and demonstration of mastery of clinical components of IV fluid therapy.
- f. "Discontinuing" means stopping the intravenous flow or removing the intravenous access device, or both, based on an authorized order or nursing assessment.
- g. "Evaluating" means analyzing, on an ongoing basis, the monitored patient response to the prescribed IV fluid therapy.
- h. "Initiating" means starting IV fluid therapy based on an authorized order by a licensed individual. Initiating shall include the following:
 1. Assessing the patient;
 2. selecting and preparing materials;
 3. calculating; and
 4. inserting and stabilizing the cannula.
- i. "Intravenous push" means direct injection of medication into the venous circulation.
- j. "IV" means intravenous.
- k. "Maintaining" means adjusting the control device for continuance of the prescribed IV fluid therapy administration rate.
- l. "Monitoring" means, on an ongoing basis, assessing, observing, and communicating each patient's response to prescribed IV fluid therapy. The infusion equipment, site, and flow rate shall be included in the monitoring process.

- m. "Stand-alone," when used to describe a course, means an IV fluid therapy course offered by a provider that has been approved by the board to offer the course independently of an approved practical nursing program.
- n. "Titration of medication" means an adjustment of the dosage of a medication to the amount required to bring about a given reaction in the individual receiving the medication. (Authorized by and implementing K.S.A. 65-1136; effective Nov. 21, 1994; amended June 12, 1998; amended Oct. 29, 1999; amended June 14, 2002; amended Jan, 17, 2020.)

60-16-103. Stand-alone course approval procedure; competency examinations; recordkeeping. (a) Each person wanting approval to offer a stand-alone course shall submit a proposal to the board.

The proposal shall contain the following:

1. The name and qualifications of the coordinator;
2. the name and qualifications of each faculty member of the course;
3. the mechanism through which the provider will determine that each licensed practical nurse seeking to take the course meets the admission requirements;

IV Therapy Regulations Revised continued on page 12

Advance your nursing career.

RN-BSN and MSN Degrees



Tabor College is accredited by the Higher Learning Commission and its RN-BSN and MSN programs are also accredited by the Commission on Collegiate Nursing Education, 655 K Street, NW, Suite 750, Washington, DC 20001. Phone: (202) 887-6791.

Tabor College
Online

For more information:
learn@tabor.edu
tabor.edu/online
(800) 546-8616

- Accelerated format (RN-BSN in 16 months; MSN in 24 months).
- 100% online delivery, classes offered one at a time.
- Faith integrated program.
- Relevant courses for nurse leaders.

UNIVERSITY OF NORTHERN COLORADO SCHOOL OF NURSING NURSING REQUIRES PASSION, STRENGTH AND A TOP-NOTCH EDUCATION



SAME FLAT-RATE TUITION PER CREDIT IN-STATE OR OUT-OF-STATE FOR PROGRAMS OFFERED THROUGH UNC EXTENDED CAMPUS

EXTENDED.UNCO.EDU/NURSING



UNC

Extended Campus



Larned State Hospital

#BE THE ONE

**WE'RE
HIRING!**

**THE LARNED STATE HOSPITAL NEEDS
CARING INDIVIDUALS LIKE YOU**

RN starting at \$28.44 per hour
LPN starting at \$19.65 per hour
Nurse Management
Opportunities Available

Larned
Kansas

Apply Today at LarnedCares.com or
contact: Mitchell Smith, Recruiter
(620)285-4383
Mitchell.Smith@KS.GOV

IV THERAPY REGULATIONS REVISED

IV Therapy Regulations Revised continued from page 11

4. a description of the educational and clinical facilities that will be utilized;
5. the outlines of the classroom curriculum and the skills curriculum, including time segments. These curricula shall meet the requirements of K.A.R. 60-16-104(b);
6. the methods of student evaluation that will be used, including a copy of the final written competency examination and the final skills competency examination; and
7. if applicable, a request for continuing education approval meeting the following requirements:
 - A. For each long-term provider, the stand-alone course provider number shall be printed on the certificates and the course roster, along with the long-term provider number; and
 - B. for each single program provider, the single program application shall be completed.
 - b. To be eligible to enroll in a stand-alone course, the individual shall be a nurse with a current license.
 - c. 1. Each stand-alone course shall meet both of the following requirements:
 - A. Consist of at least 30 clock-hours of instruction; and
 - B. require at least eight clock-hours of supervised clinical or skills lab practice, which shall include at least one successful peripheral venous access procedure and the initiation of an intravenous infusion treatment modality.
 2. Each stand-alone course, final written competency examination, and final clinical competency examination shall meet the board-approved curriculum requirements specified in K.A.R. 60-16-104 (b) (1)-(23).
 - d. 1. Each stand-alone course coordinator shall meet the following requirements:
 - A. Be licensed as a registered professional nurse;
 - B. be responsible for

- the development and implementation of the course; and
 - C. have experience in IV fluid therapy and knowledge of the IV fluid therapy standards.
2. Each primary faculty member shall meet the following requirements:
 - A. Be currently licensed to practice as a registered professional nurse in Kansas;
 - B. have clinical experience that includes IV fluid therapy within the past five years; and
 - C. maintain competency in IV fluid therapy.
 3. Each guest lecturer shall have professional preparation and qualifications for the specific subject in which that individual instructs.
- e. 1. The facility in which skills practice and the competency examination are conducted shall allow the students and faculty access to the IV fluid therapy equipment and IV fluid therapy recipients and to the pertinent records for the purpose of documentation. Each classroom shall contain sufficient space, equipment, and teaching aids to meet the course objectives.
 2. There shall be a signed, written agreement between the provider and each affiliating health care facility that specifies the roles, responsibilities, and liabilities of each party. This written agreement shall not be required if the only health care facility to be used is that of the provider.
- f. 1. The stand-alone course coordinator shall perform the following:
 - A. Ensure that the clinical record sheet is complete, including competencies and scores;
 - B. award a certificate to each licensed nurse documenting successful completion of both the final written competency examination and the final skills competency examination;
 - C. submit to the board, within 15 days of course completion, a typed, alphabetized roster listing

- the name and license number of each individual who successfully completed the course and the date of completion. The coordinator shall ensure that each roster meets the following requirements:
 - i. RN and LPN participants shall be listed on separate rosters; and
 - ii. the roster shall include the provider name and address, the single or long-term provider number, the stand-alone course provider number, and the coordinator's signature; and
 - D. maintain the records of each individual who has successfully completed the course for at least five years.
- g. Continuing education providers shall award at least 32 contact hours to each LPN who successfully completes the course according to K.A.R. 60-9-106. Continuing education providers shall award 20 contact hours, one time only, to each RN who successfully completes the course.
 - h. After initial approval, each change in the stand-alone course shall be provided to the board for approval before the change is implemented.
 - i. 1. Each stand-alone course provider shall submit to the board an annual report for the period of July 1 through June 30 of the respective year that includes the total number of licensees taking the course, the number passing the course, and the number of courses held.
 2. The single program providership shall be effective for two years and may be renewed by submitting the single offering provider application and by paying the fee specified in K.A.R. 60-4-103(a)(5). Each single program provider who chooses not to renew the providership shall notify the board in writing of the location at which the rosters and course materials will be accessible to the board for three years.
 3. Each long-term provider shall submit the materials outlined in subsection (a) with the five-year long-term provider renewal.
 - j. If a course does not meet or continue to meet the requirements for approval established by the board or if there is a material misrepresentation of any fact with the information submitted to the board by a provider, approval may be withheld, made conditional, limited, or withdrawn by the board after giving the



Hiring for a DON

Apply online at sunsethomeinc.com or call at 785-243-2720



BAKER UNIVERSITY
bakerU.edu/MSN

We appreciate you.
Use your experience on the frontlines to shape the next generation of nurses. Our convenient MSN program is 100% online.

Master of Science in Nursing with two online tracks:
Nursing Education | Nursing Administration
Program starts twice a year. Call or text 913.270.1307.

NOW HIRING



RNs in Wichita
We care for critically ill patients.

- \$10,000 sign-on bonus
- Full-time days or nights
- Quarterly bonus for CCRNs
- New grad RN program

CONTACT: Amy Tanksley, HR Manager
atanksley@selectmedical.com • 316.559.9879
careers.selectmedical.com

Now hiring RNs & LPNs in Wichita, Pittsburg, Manhattan, Hays and Kansas City

Enjoy comprehensive benefits, generous PTO, sign-on bonuses in select locations, tuition reimbursement, discount programs and much more!

Apply today!
<http://ascn.io/ksnurses>



provider notice and an opportunity to be heard. (Authorized by and implementing K.S.A. 65-1136; effective Nov. 21, 1994; amended June 14, 2002; amended July 29, 2005; amended May 18, 2012; amended Jan. 17, 2020.)

60-16-104. Standards for course and program curriculum content.

- a. The purpose of the intravenous fluid therapy content and stand-alone course shall be to prepare practical nursing students or licensed practical nurses to perform safely and competently the activities as defined in K.A.R. 60-16-102. The course shall be based on the nursing process and current intravenous nursing standards of practice.
 - 1. Intravenous fluid therapy content provided as part of a practical nursing program's curriculum as specified in K.A.R. 60-2-104 or as a stand-alone course offered by an approved provider shall meet the requirements of this regulation.
 - 2. Each provider of a stand-alone course shall obtain approval from the board before offering an intravenous fluid therapy course as specified in K.A.R. 60-16-103.
 - 3. Each provider of a stand-alone course shall submit documentation of the use of the curriculum required in this regulation to the board.
 - 4. Each practical nursing program administrator wanting to implement the intravenous fluid therapy curriculum as required in this regulation shall submit a major curriculum change form as specified in K.A.R. 60-2-104(g).
- b. Each stand-alone course or practical nursing program curriculum in intravenous fluid therapy shall include instruction in the following topics:
 - 1. Definition of intravenous fluid therapy and indications as specified in K.A.R. 60-16-101;
 - 2. scope of practice as specified in K.A.R. 60-16-102;

- 3. types of vascular-access delivery devices;
- 4. age-related considerations;
- 5. legal implications for intravenous fluid therapy;
- 6. anatomy and physiology;
- 7. fluid and electrolyte balance;
- 8. infusion equipment used in intravenous fluid therapy;
- 9. patient care;
- 10. infusion therapies;
- 11. parenteral solutions and indications;
- 12. infection control and safety;
- 13. site care and maintenance;
- 14. vascular-access device selection and placement;
- 15. insertion of peripheral short catheters;
- 16. administration, maintenance, and monitoring of peripheral intravenous fluid therapy;
- 17. infusion-related complications and nursing interventions;
- 18. central and peripheral vascular devices;
- 19. administration, maintenance, and monitoring of central intravenous fluid therapy;
- 20. documentation;
- 21. patient education;
- 22. a testing component through which each student is able to demonstrate competency related to intravenous fluid therapy; and
- 23. a means to verify that a student has successfully completed the stand-alone course or practical nursing program curriculum in intravenous fluid therapy as specified in this regulation. (Authorized by and implementing K.S.A. 65-1136; effective Nov. 21, 1994; amended Dec. 13, 1996; amended Oct. 29, 1999; amended April 20, 2001; amended June 14, 2002; amended July 29, 2005; amended May 18, 2012; amended Jan.17, 2020.)

Will CNE be required after NLC?

Beginning July 1, 2019, Kansas State Board of Nursing will join the Nurse Licensure Compact. As such, the KSBN staff will grant Multistate Licenses to those who apply and qualify for this. There are 11 Uniform Licensure Requirements that all licensees in any compact state must meet to secure a Multistate License.

Kansas, along with about half of the states in the United States, as well as half of the states in the Nurse Licensure Compact, require Continuing Nursing Education. This is a reminder that CNE is required for renewal for any nursing license (single state or multistate) issued by the Kansas State Board of Nursing. The current requirement of 30 hours of CNE will continue to be required for renewal.

Thank you
for everything!

QSNurses | www.qsnurses.com

WE NEED YOUR HELP!

Charge Nurse, Full-time night position, RN or LPN needed immediately.

Offering a \$4,000 Sign-On Bonus

Benefits included for full-time employees who work an average of 30 hours a week, Health, Dental, Vision, and Retirement.

Please apply at good-sam.com/careers



Good Samaritan Society Liberal
620.624.3831

ADDRESS CHANGE

You can use your user ID and password to change your address on-line OR send us the change of address in writing. Please submit within 30 days of address change. You may mail your address change to Kansas State Board of Nursing; 900 SW Jackson St, Ste 1051; Topeka, KS 66612-1230. The Address Change form is available at <https://ksbn.kansas.gov/forms/>.

If you do not have access to a computer please include the following information in your written request:

First and Last Name (please print complete names)

Kansas Nursing License Number(s)

Social Security Number

Old Address and New Address
(complete Street Address with Apt #, City, State, and Zip)

Home phone number and Work Phone number

Date the New Address is in Effect

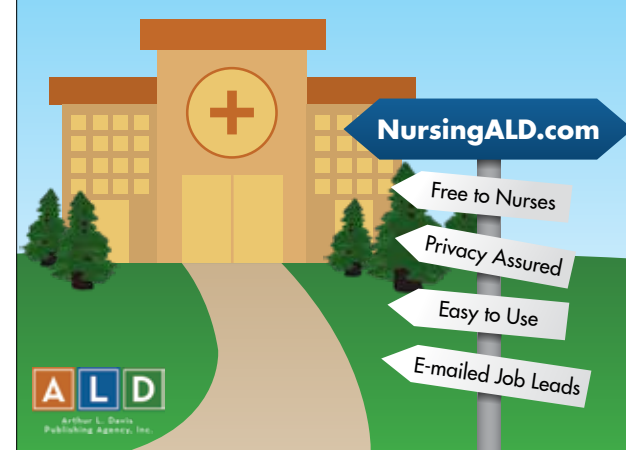
Sign and date your request

We are unable to accept your request to change your address from information delivered over the phone or via an email. All requests must be received in writing and include a signature.

Nursing License Renewal Schedule

If your license expires on: (Please refer to the Check Status of Expiration to verify your expiration date.)	You should receive your yellow renewal notice postcard by:	Your properly completed renewal application should be in the Board office by:
June 30, 2020	April 15, 2020	May 15, 2020
July 31, 2020	May 15, 2020	June 15, 2020
August 31, 2020	June 15, 2020	July 15, 2020
September 30, 2020	July 15, 2020	August 15, 2020
October 31, 2020	August 15, 2020	September 15, 2020
November 30, 2020	September 15, 2020	October 15, 2020

NursingALD.com can point you right to that perfect NURSING JOB!



CNE Guidelines for Advanced Practice Nurses

K.A.R. 60-11-113(b) reads "License renewal, on and after January 1, 2013, each individual renewing a license shall have completed the required 30 contact hours of approved continuing nursing education (CNE) related to the **advanced practice role** during the most recent prior license period. Proof of completion of 30 contact hours of approved CNE in the advanced practice nurse role may be requested by the board."

Guidelines for advanced practice nurses seeking continuing nursing education offerings:

Compare the course learning objectives/outcomes for any course you are considering with the definition of Continuing Nursing Education: Continuing nursing education means a learning experience intended to build upon the educational and experiential bases of the advanced practice nurse for the enhancement of practice, education, administration, research or theory development to the end of improving the health of the public.

- Is the course designed to provide new knowledge or enhance current knowledge and/or skills in your advanced practice role, to assist you in improving the health of the public?
- Is the course designed to provide you with the skills and/or knowledge to provide innovative changes supported

by research and theory within your advanced practice role, to assist you in improving the health of the public?

- Is the course designed to provide you with new and developing standards of practice within your advanced practice role, to assist you in improving the health of the public?
- Is the course designed to assist you within your role by advancing your clinical decision-making skills, to assist you in improving the health of the public?

If the course learning objectives meet the above criteria, then the offering is appropriate for advanced practice continuing nursing education.

Guidelines for approved CNE offerings:

K.S.A. 65-1119(5) "The board shall accept offerings as continuing nursing education presented by: colleges that are approved by a state or national department of education and providers approved by other state boards of nursing, the national league for nursing, the national federation of licensed practical nurses, the American nurse credentialing center, or other such national organizations as listed in the rules and regulations adopted by the board."

PLEASE NOTE:

- All college courses must be submitted and approved by the Individual Offering Approval (IOA) process, **prior** to renewal of license
- CME's are continuing medical education (not continuing nursing education) and must be submitted and approved by the Individual Offering Approval (IOA) process, **prior** to renewal of license
- If the CNE certificate of completion does not clearly indicate being approved for advanced practice nurses, you must submit the course learning objectives with the certificate for proof of advanced practice continuing nursing education, if audited or reinstating your license

WALL CERTIFICATES

Wall Certificates suitable for framing are available through the Kansas State Board of Nursing. Certificates are available to those RNs/LPNs/LMHTs/NPs/CNSs/NMWS/RNAs who hold a permanent Kansas license. To obtain a certificate, please complete the following form.

Name: _____

Address: _____

City: _____

State: _____ Zip Code: _____

Certificate of Qualification (License) Number: _____

Original Date of Issue: _____

Each certificate is \$10.00.

Please submit order form to:
Kansas State Board of Nursing
Landon State Office Building
900 SW Jackson, Suite 1051
Topeka, KS 66612-1230

WE SALUTE YOU, OUR EVERYDAY HEROES,
AND INVITE YOU TO JOIN OUR EXCEPTIONAL
TEAM OF NURSES IN KANSAS.

Contact Kelli Holland:
kelli@teamcenturion.com
866.616.8389

www.centurionjobs.com
Equal Opportunity Employer





FIND YOUR SMILE AT PRMC!

Looking for Registered Nurses to
join our "Simply The Best" Team!

APPLY AT WWW.PRMC.ORG



Practical Nursing Instructor

Flint Hills Technical College is seeking a full time instructor for the Practical Nursing program beginning in the Fall of 2020.

Must have a BSN and at least two years of nursing experience.

Send letter of interest, resume, and names and contact information for three professional references to Human Resources, Flint Hills Technical College, 3301 W. 18th Ave., Emporia, KS 66801 or email saweeks@fhct.edu.

For questions specific to the program please contact Kathy Bode, 620-341-1326.

Position open until filled.

EOE



Take your passion for nursing to the next level
with a flexible, relevant degree from
MidAmerica Nazarene University.

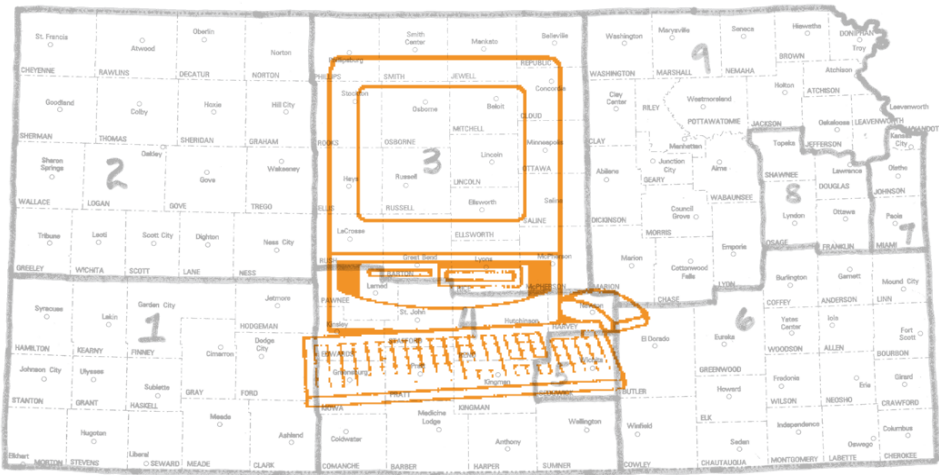
**RN-BSN | RN-MSN | MSN
MSN/MBA | Nurse Practitioner**

MNU.edu/graduate

913.971.3800



CONTINUING NURSING EDUCATION OFFERINGS



HOME STUDY

ABOUT TIME: GETTING THE RIGHT THINGS DONE

Spon: Professional Continuing Education, Inc., PO Box 8528, Prairie Village, KS 66208, www.healthcare-pce.com. Contact: Ruthanne Schroeder at Ruthanne@healthcare-pce.com, 913-341-5627. Fac: Judy Zinn, L.M.S.W., C.H.W.C. Aud: All Levels of Nursing. Time is our most precious resource, this course will provide strategies needed to manage your time effectively and wisely. Fee: \$45.00 Contact Hours: 4.0. Professional Continuing Education, Inc., is approved as a provider of CNE by the Kansas State Board of Nursing. This course offering is approved for contact hours applicable for APRN, RN or LPN relicensure. Kansas State Board of Nursing provider number LT0053-0949.

THE PATHWAY OF GRIEF: TERMINAL DIAGNOSES THROUGH BEREAVEMENT

Spon: Professional Continuing Education, Inc., PO Box 8528, Prairie Village, KS 66208, www.healthcare-pce.com. Contact: Ruthanne Schroeder at Ruthanne@healthcare-pce.com, 913-341-5627. Fac: Jody Gyulay, Ph.D., L.C.S.W., R.N. Aud: All Levels of Nursing. This course will identify the normal grief process from diagnosis through bereavement for the patient, family and care givers. You will see the dying process as a complex journey for both the patient and the family, and you will learn ways to allay their pain and suffering while bringing calm to the dying patient and family. Fee: \$100.00 Contact Hours: 10.0. Professional Continuing Education, Inc., is approved as a provider of CNE by the Kansas State Board of Nursing. This course offering is approved for contact hours applicable for APRN, RN or LPN relicensure. Kansas State Board of Nursing provider number LT0053-0949.

SUPERACHIEVERS AND COPING STRATEGIES

Spon: Professional Continuing Education, Inc., PO Box 8528, Prairie Village, KS 66208, www.healthcare-pce.com. Contact: Ruthanne Schroeder at Ruthanne@healthcare-pce.com, 913-341-5627. Fac: Judy Zinn, L.M.S.W., C.H.W.C. Aud: All Levels of Nursing. This course will provide strategies needed to manage professional responsibilities without suffering the debilitating effects of perfectionism. Fee: \$35.00. Contact Hours: 2.4. Professional Continuing Education, Inc., is approved as a provider of CNE by the Kansas State Board of Nursing. This course offering is approved for contact hours applicable for APRN, RN or LPN relicensure. Kansas State Board of Nursing provider number LT0053-0949.

ASSERTIVENESS: NEW PERSPECTIVES

Spon: Professional Continuing Education, Inc., PO Box 8528, Prairie Village, KS 66208, www.healthcare-pce.com. Contact: Ruthanne Schroeder at Ruthanne@healthcare-pce.com, 913-341-5627. Fac: Judy Zinn, L.M.S.W., C.H.W.C. Aud: All Levels of Nursing. This course will provide strategies needed to assertively manage challenging communication issues with patients, physicians and other members of the health care treatment team. Fee: \$40.00. Contact Hours 3.3. Professional Continuing Education, Inc., is approved as a provider of CNE by the Kansas State Board of Nursing. This course offering is approved for contact hours applicable for APRN, RN or LPN relicensure. Kansas State Board of Nursing provider number LT0053-0949.

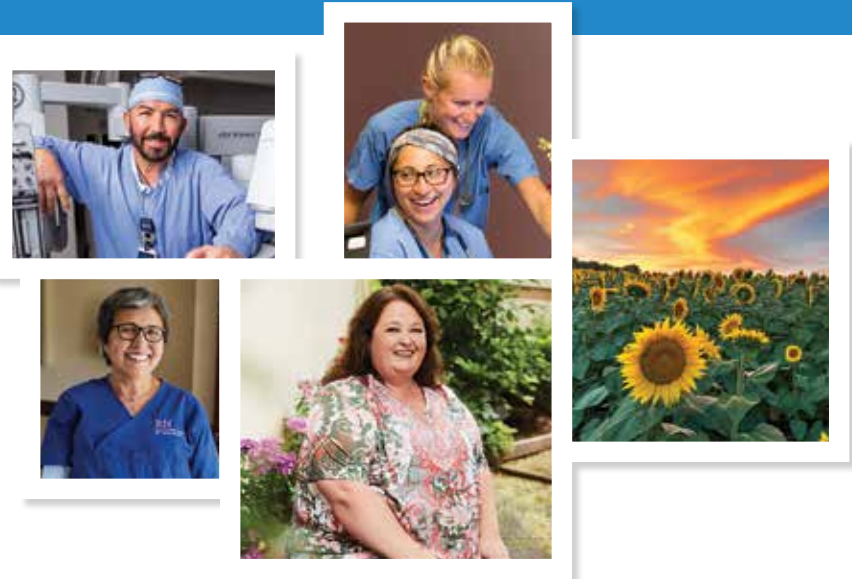
CONFLICT MANAGEMENT: SKILLS FOR UNCERTAIN TIMES

Spon: Professional Continuing Education, Inc., PO Box 8528, Prairie Village, KS 66208, www.healthcare-pce.com. Contact: Ruthanne Schroeder at Ruthanne@healthcare-pce.com, 913-341-5627. Fac: Judy Zinn, L.M.S.W., C.H.W.C. Aud: All Levels of Nursing. This course will provide skills needed to manage conflict with patients, physicians and allied health professionals. Fee: \$65.00. Contact Hours: 5.5 Professional Continuing Education, Inc., is approved as a provider of CNE by the Kansas State Board of Nursing. This course offering is approved for contact hours applicable for APRN, RN or LPN relicensure. Kansas State Board of Nursing provider number LT0053-0949.

PATIENT COMPLIANCE: A NEW LOOK

Spon: Professional Continuing Education, Inc., PO Box 8528, Prairie Village, KS 66208, www.healthcare-pce.com. Contact: Ruthanne Schroeder at Ruthanne@healthcare-pce.com, 913-341-5627. Fac: Judy Zinn, L.M.S.W., C.H.W.C. Aud: All Levels of Nursing. This course will provide information needed to prevent and manage non-compliant patient behavior. Effective patient teaching tools will be shown to enhance patient compliance and foster a working relationship between patients and providers. Fee: \$65.00. Contact Hours: 5.4. Professional Continuing Education, Inc., is approved as a provider of CNE by the Kansas State Board of Nursing. This course offering is approved for contact hours applicable for APRN, RN or LPN relicensure. Kansas State Board of Nursing provider number LT0053-0949.

Live Your Mission. Love Your Career.



Amazing careers in great places to live

With 15 hospitals spanning Colorado, two in western Kansas and more than 250 clinics, you'll find us in great places to live such as Garden City, Ulysses, Dodge City and more! Regardless of location, you can expect to work with a mission minded team of compassionate professionals who care about your success.

Why bring your career to Centura Health?

Backed by our Mission, Vision and Values, Centura Health is proud to employ some of the most talented hearts and minds in medicine today. Our recruiters are passionate about helping incredible talent identify the right opportunity in a place they will love to call home.

Our total rewards are designed with your well-being in mind and include:

- Highly-competitive pay
- 401(k) plan with generous match
- Low-cost, comprehensive benefits
- Generous paid time off and more!

If you're ready to explore a flourishing career, please connect with us at:

centura.org/careers



Centura Health is an Equal Opportunity Employer, including disability/vet.

CSL Plasma

Good for You. Great for Life.

NURSES & PARAMEDICS

CSL Plasma has immediate PT&FT opportunities for entry level & experienced LPNs, RNs and Paramedics in our Plasma Center in Lawrence, KS and Manhattan, KS. Perform physical assessments & determine donor suitability for plasma donations. 1 year experience in field care/hospital preferred; state certification & license required. Competitive compensation & benefits: medical, dental, vision & life, 3 weeks paid time off, 401(K) & more.

EOE/DFWP



APPLY ONLINE AT CSLPLASMA.COM



CONTINUING NURSING EDUCATION OFFERINGS

THE ART OF SELF-HEALTH

Spon: Professional Continuing Education, Inc., PO Box 8528, Prairie Village, KS 66208, www.healthcare-pce.com. Contact: Ruthanne Schroeder at Ruthanne@healthcare-pce.com, 913-341-5627. Fac: Carol LaRue, OTR/L. Aud: All Levels of Nursing. This unique course will help you expand personally and professionally, you will increase your knowledge and awareness of the imbalances of illness and disease while learning practical applications and activities to nurture the seven dimensions of well being and recognize the connection between mind, body and spirit. This course available on-line or by text book. Fee: \$65.00 Contact Hours: 6.0. Professional Continuing Education, Inc., is approved as a provider of CNE by the Kansas State Board of Nursing. This course offering is approved for contact hours applicable for APRN, RN or LPN relicensure. Kansas State Board of Nursing provider number LT0053-0949.

THE TRUTH ABOUT ANTACIDS

Spon: Professional Continuing Education, Inc., PO Box 8528, Prairie Village, KS 66208, www.healthcare-pce.com. Contact:

Ruthanne Schroeder at Ruthanne@healthcare-pce.com, 913-341-5627. Fac: Lisa Everett Anderson, R.Ph, F.A.C.A., C.C.N. Aud: All Levels of Nursing. Learn the truth about one of the most common complaints, acid reflux or GERD, and what is the correct course of action to get permanent relief. Fee: \$15.00 Contact Hours: 1.0. Professional Continuing Education, Inc., is approved as a provider of CNE by the Kansas State Board of Nursing. This course offering is approved for contact hours applicable for RN or LPN relicensure. Kansas State Board of Nursing provider number LT0053-0949.

TICK-BORNE DISEASES IN THE UNITED STATES

Spon: Professional Continuing Education, Inc., PO Box 8528, Prairie Village, KS 66208, www.healthcare-pce.com. Contact: Ruthanne Schroeder at Ruthanne@healthcare-pce.com, 913-341-5627. Fac: Christine Kerns, B.A., R.N. Aud: All Levels of Nursing. The incidence of Tick-Borne Disease has sky rocketed, learn the reasons for this increase and the identifying signs and symptoms and treatment approaches. Fee: \$25.00 Contact Hours: 2.0. Professional Continuing Education, Inc., is approved as a provider of CNE by the

Kansas State Board of Nursing. This course offering is approved for contact hours applicable for APRN, RN or LPN relicensure. Kansas State Board of Nursing provider number LT0053-0949.

WEIGHT MANAGEMENT STRATEGIES: A HOLISTIC APPROACH

Spon: Professional Continuing Education, Inc., PO BOX 8528, Prairie Village, KS 66208, www.healthcare-pce.com. Contact: Ruthanne Schroeder at Ruthanne@healthcare-pce.com, 913-341-5627. Fac: Sue Popkess-Vavter, Ph.D., R.N. Aud: All Levels of Nursing. You will learn new strategies for making lifestyle changes that promote healthy weight by developing a daily plan using the cognitive restructuring strategies, Eat for Hunger, Exercise for Life and Esteem for Self. Fee: \$80.00 Contact Hours: 7.5. Professional Continuing Education, Inc., is approved as a provider of CNE by the Kansas State Board of Nursing. This course offering is approved for contact hours applicable for APRN, RN or LPN relicensure. Kansas State Board of Nursing provider number LT0053-0949.

LOOKING FOR DEDICATED STAFF MEMBERS.

NOW HIRING

RN'S AND LPN'S



WE OFFER SIGN ON BONUSES, COMPETITIVE PAY, SHIFT DIFFERENTIAL, MEDICAL, DENTAL, LIFE INSURANCE, 401K, PTO/ SICK AND MOST IMPORTANTLY A REWARDING WORKING ENVIRONMENT.

 **BALDWIN**
HEALTHCARE & REHAB CENTER
1223 Orchard Lane
Baldwin City, Kansas 66006
(785) 594-6492 • baldwinhrc.com

 **HIGHLAND**
HEALTHCARE & REHAB CENTER
402 South Avenue
Highland, Kansas 66035
(785) 442-3217 • highlandhrc.com

 **LOUISBURG**
HEALTHCARE & REHAB CENTER
1200 S Broadway Street
Louisburg, Kansas 66053
(913) 837-2916 • louisburghrc.com

 **PLAZA WEST**
HEALTHCARE & REHAB CENTER
1570 SW Westport Drive
Topeka, KS 66604
(785) 271-6700 • plazawesthrc.com

 **RICHMOND**
HEALTHCARE & REHAB CENTER
340 E South Street
Richmond, Kansas 66080
(785) 835-6135 • richmondhrc.com

 **ROSSVILLE**
HEALTHCARE & REHAB CENTER
600 E Perry Street
Rossville, Kansas 66533
(785) 584-6104 • rossvillehrc.com

 **SANDPIPER**
HEALTHCARE & REHAB CENTER
5808 West 8th Street North
Wichita, Kansas 67212
(316) 945-3606 • sandpiperhrc.com

 **SHAWNEE GARDENS**
HEALTHCARE & REHAB CENTER
6416 Long Street
Shawnee, Kansas 66216
(913) 631-2146 • shawneegardenshrc.com

 **WATHENA**
HEALTHCARE & REHAB CENTER
2112 U.S. 36
Wathena, Kansas 66090
(785) 989-3141 • wathenahrc.com

WICHITA STATE UNIVERSITY NURSING PROGRAMS

➤ REGISTERED NURSE (RN) TO BSN *(fully online)*

- Earn your BSN in as little as 1 year
- Get up to 30 credit hours for prior coursework
- Build a foundation for advanced nursing degrees

Priority application deadline: July 1 for fall; Dec. 1 for spring

➤ MASTER OF SCIENCE IN NURSING (MSN)

This program offers two concentrations:

- Nursing Education *(fully online)*
- Nursing Leadership and Administration

Next class begins in fall

➤ DOCTOR OF NURSING PRACTICE (DNP)

Post-BSN Entry: Advanced Practice Registered Nurse (APRN)

Earn specialization in:

- Family Nurse Practitioner
- Adult Gerontology Acute Care Nurse Practitioner
- Other specializations may be available

Next class begins in fall

DNP Post Master (APRN) *(fully online)*

Next class begins in spring



WHY CHOOSE OUR PROGRAMS?

- Online programs offer convenience and affordable in-state tuition
- Individualized faculty advising
- High post-graduation employment rate
- Exceptional success in advanced careers



The baccalaureate degree in nursing, master's degree in nursing and Doctor of Nursing Practice at WSU are accredited by the Commission on Collegiate Nursing Education (www.ccnaccreditation.org).



FOR MORE INFORMATION CALL (316) 978-3610 OR (800) 516-0290 | WICHITA.EDU/NURSING

**WRITE
YOUR
STORY**
with Oklahoma's
healthcare leader.

Work that matters, today and every day.
Join the OU Medicine team.

Now, more than ever, our healthcare workers are rising to the challenge. With a new building dotting the Oklahoma City horizon, our state-of-the-art medical tower at OU Medical Center will meet an increasing demand for the highest level of care. Together, we are answering the call of our community like never before.

OU Medical Center is home to the state's only Level 1 Trauma Center, Comprehensive Stroke Center, and NCI-Designated Cancer Center.

Our nurses find pride in working as a team and utilizing the latest technologies while providing complex care. We offer tuition reimbursement, relocation assistance, new-graduate residency programs and bonuses for professional certifications.

Now's the time to write your story with OU Medicine.

Learn more and apply at careers.oumedicine.com or reach out to Talent@oumedicine.com.

